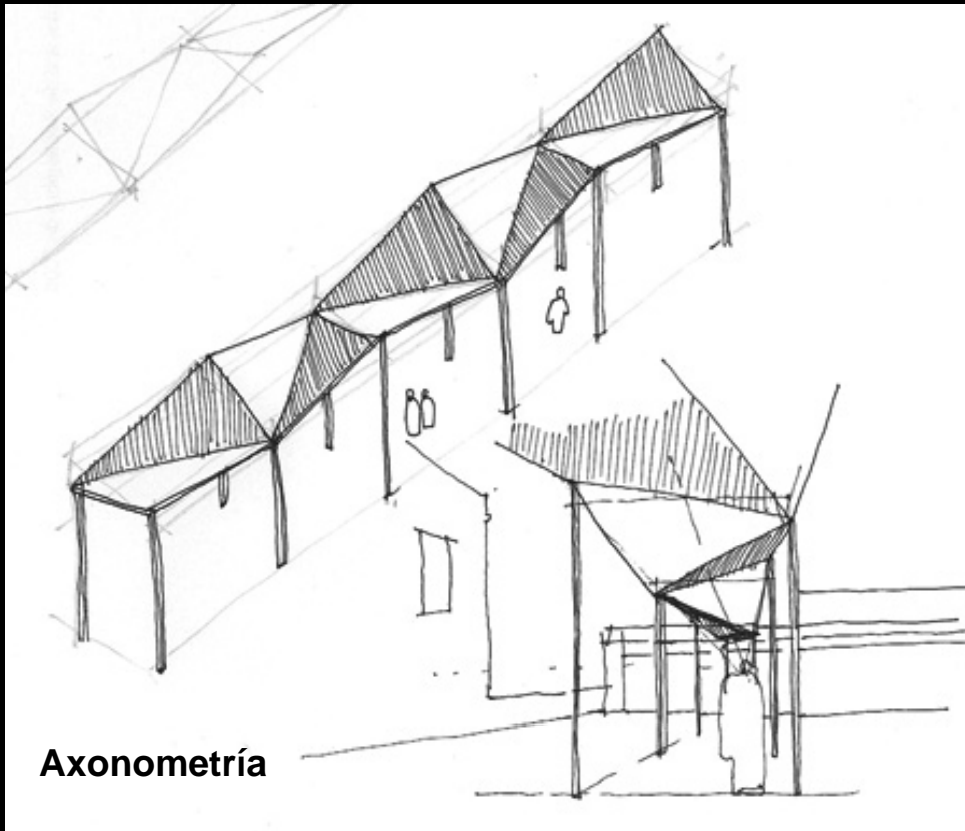
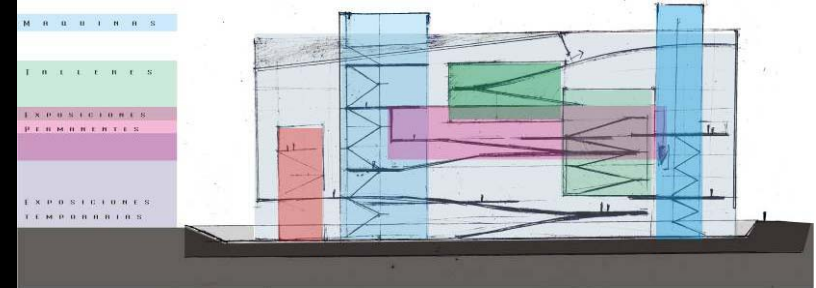
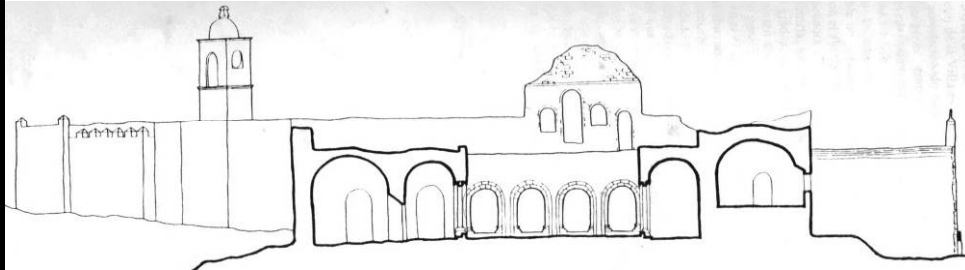


CROQUIS: DIBUJO A MANO ALZADA

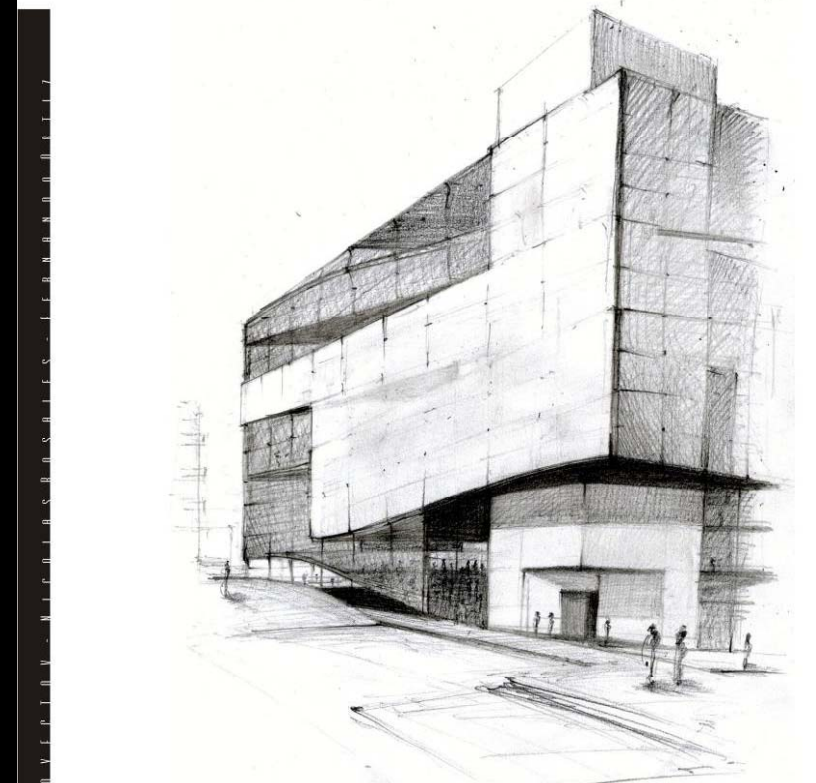
EN LOS DISTINTOS SISTEMAS GRÁFICOS

Geométrales

(planta, corte, vista)

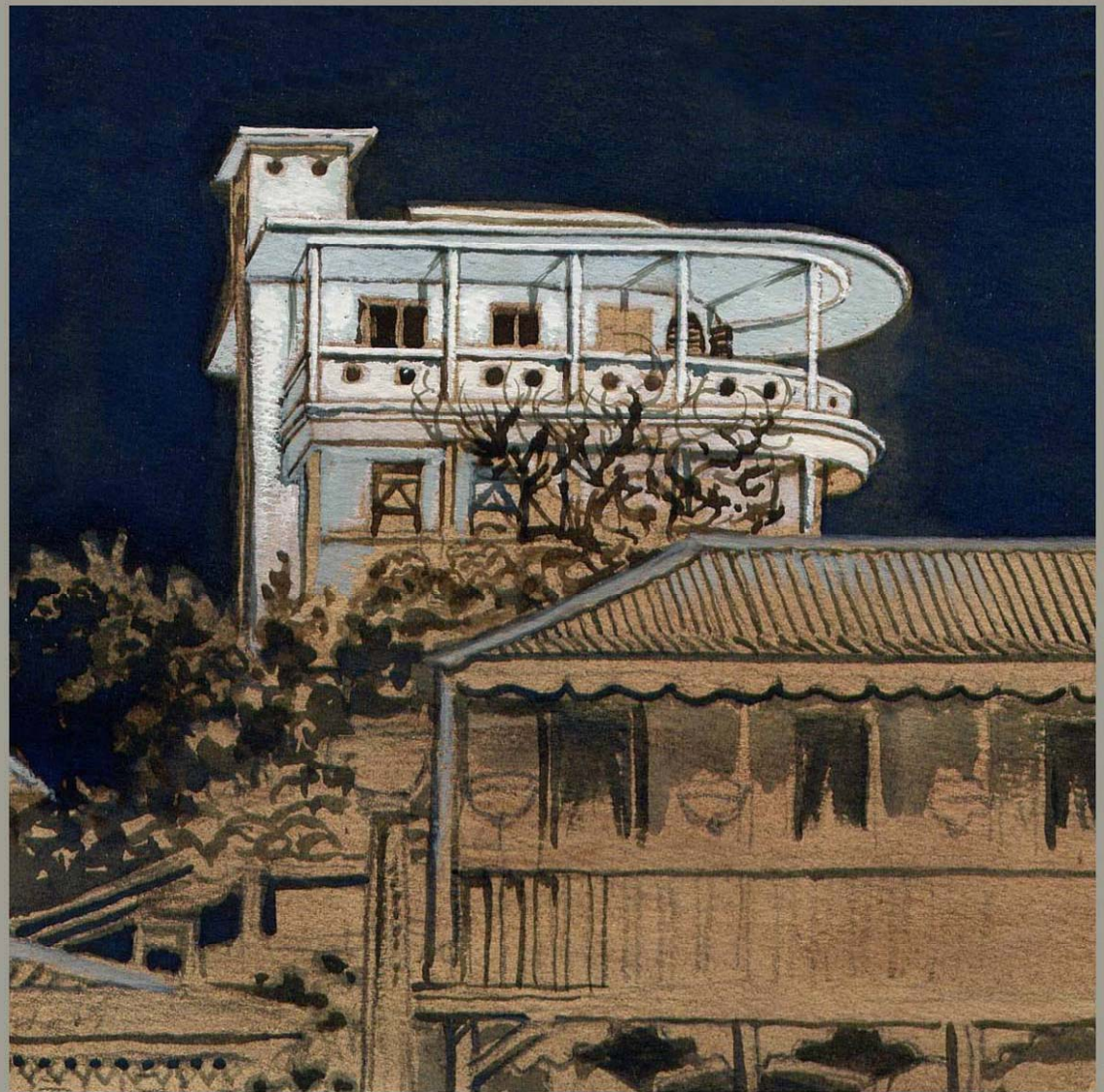
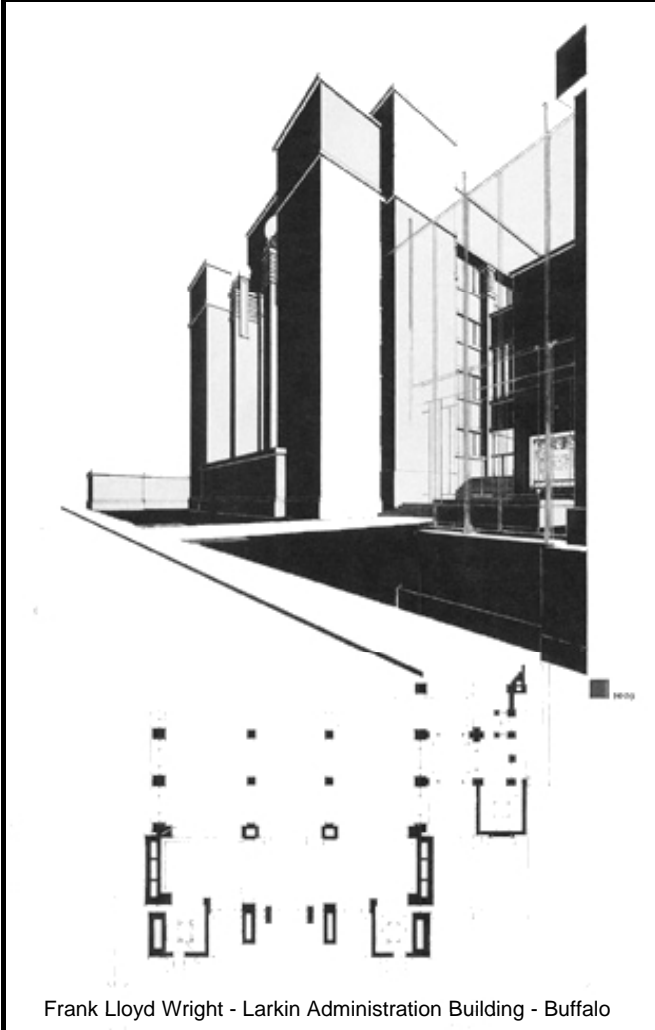


Axonometría

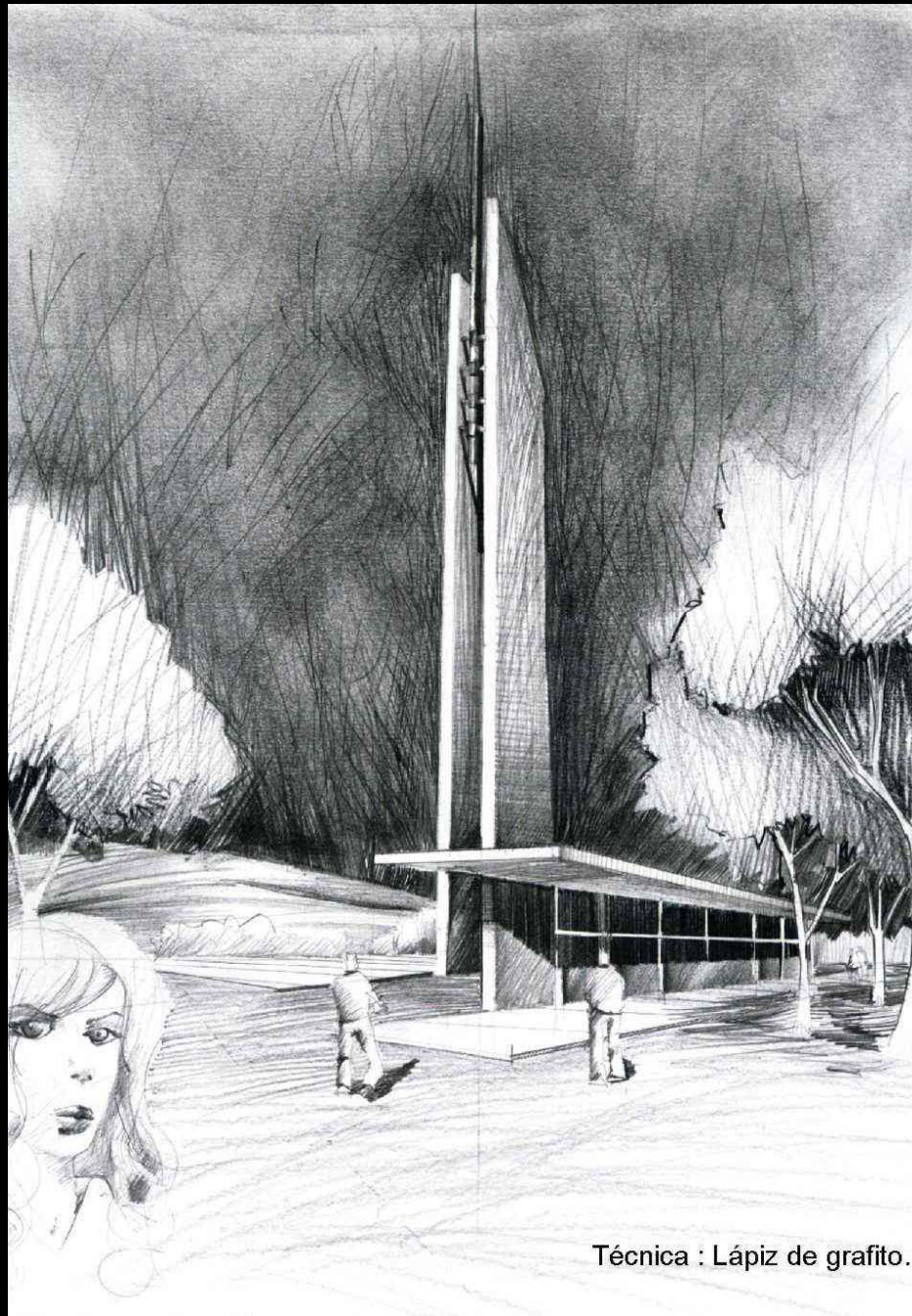


Perspectivas

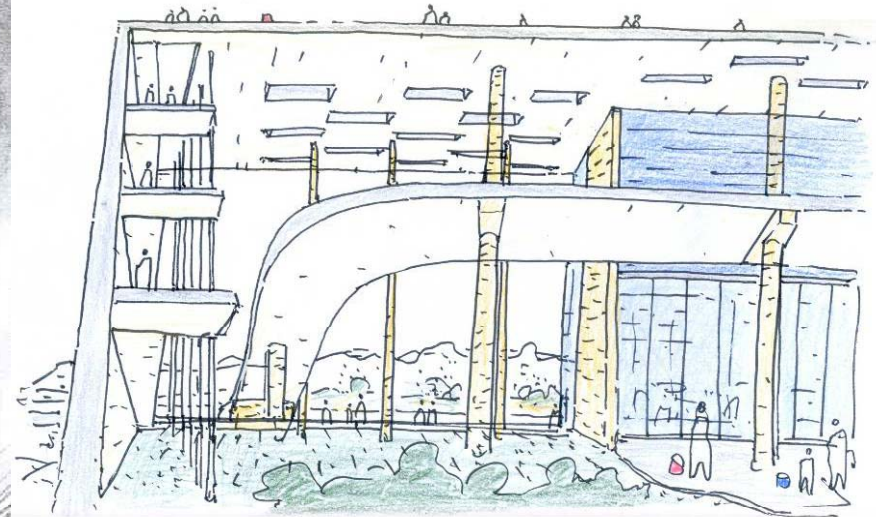
CROQUIS CON DISTINTAS TÉCNICAS GRÁFICAS



CROQUIS CON DISTINTAS TÉCNICAS GRÁFICAS

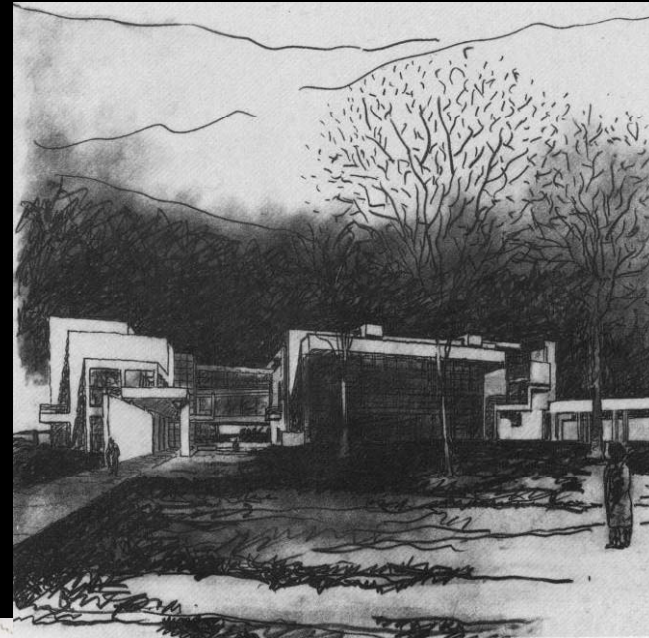
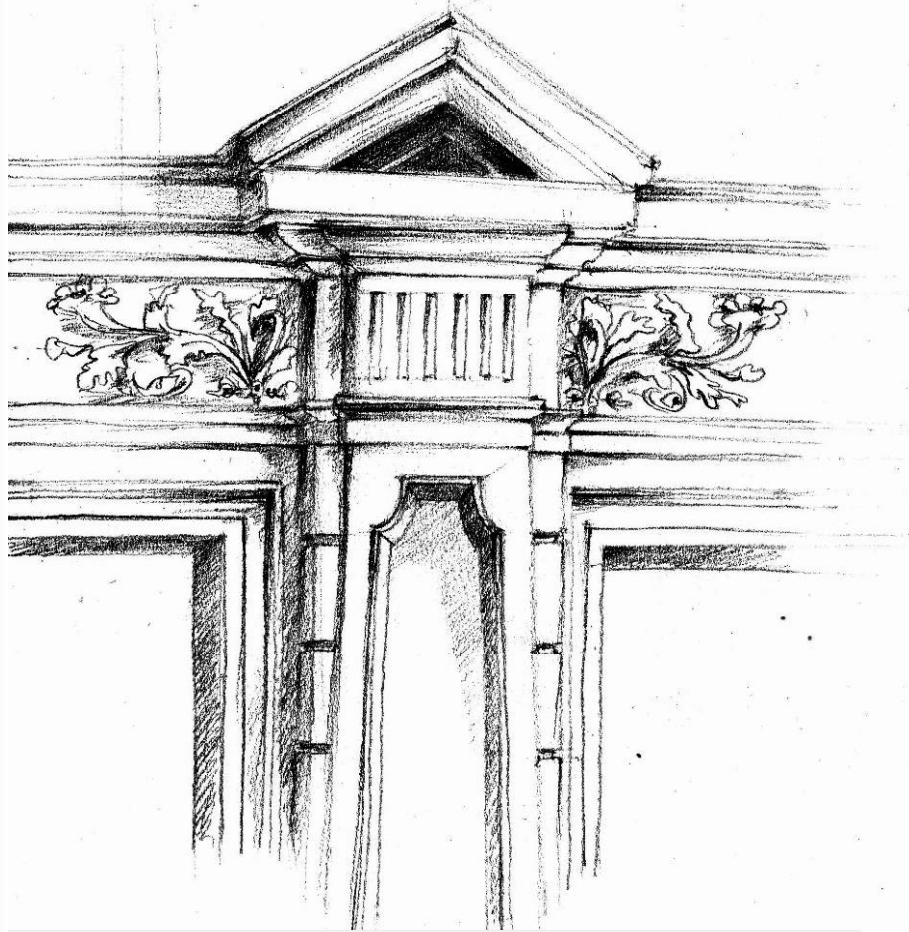


Técnica : Lápiz de grafito.



CROQUIS:

CROQUIS CON DISTINTAS TÉCNICAS GRÁFICAS



*Spunta, lungo Barmine e in piccole, color brillanti,
l'acqua si dirige a capire la profondità della prospettiva,
sopra a Barmine la strappa in una delle torche
Bianco, nero, rosa, blu, verde; così come si muovono
con il vento colorato e l'acqua che scende!*

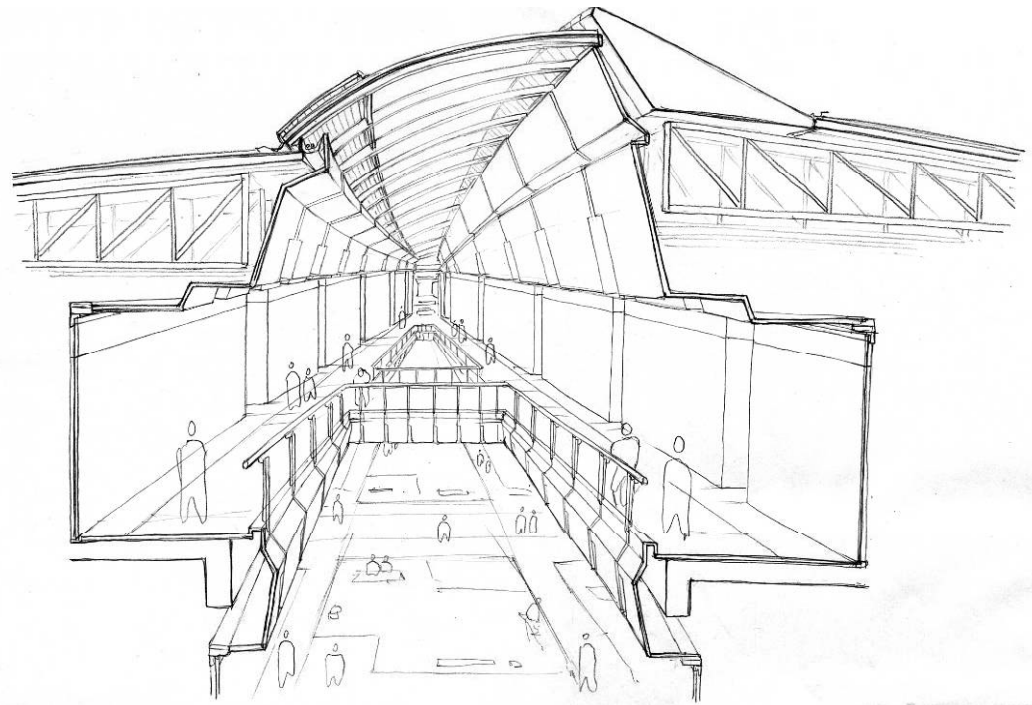
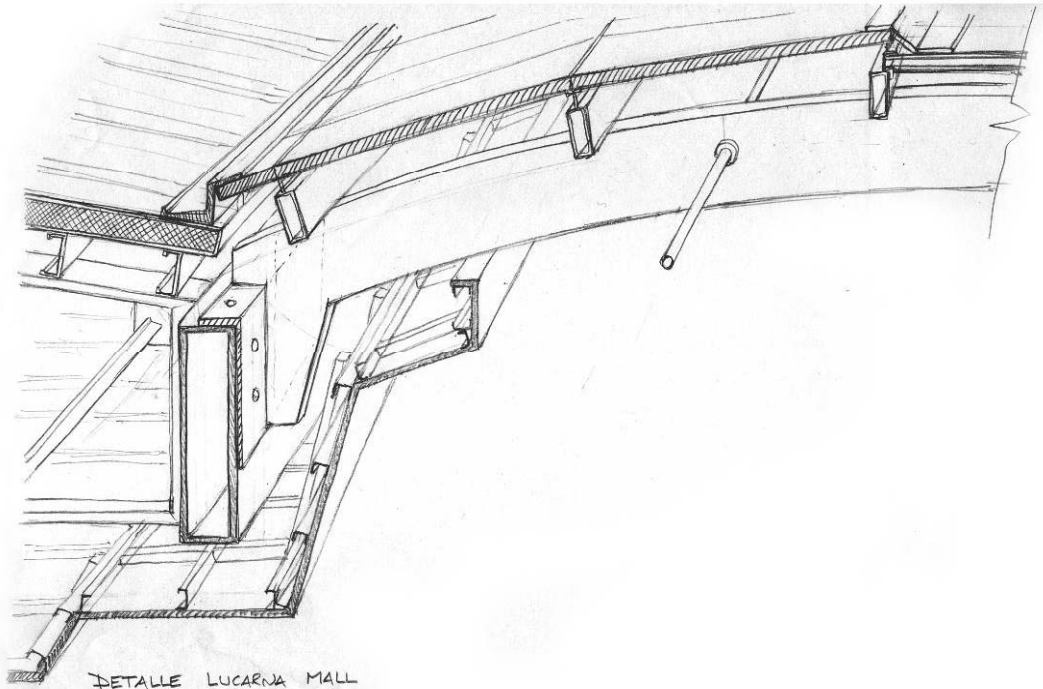
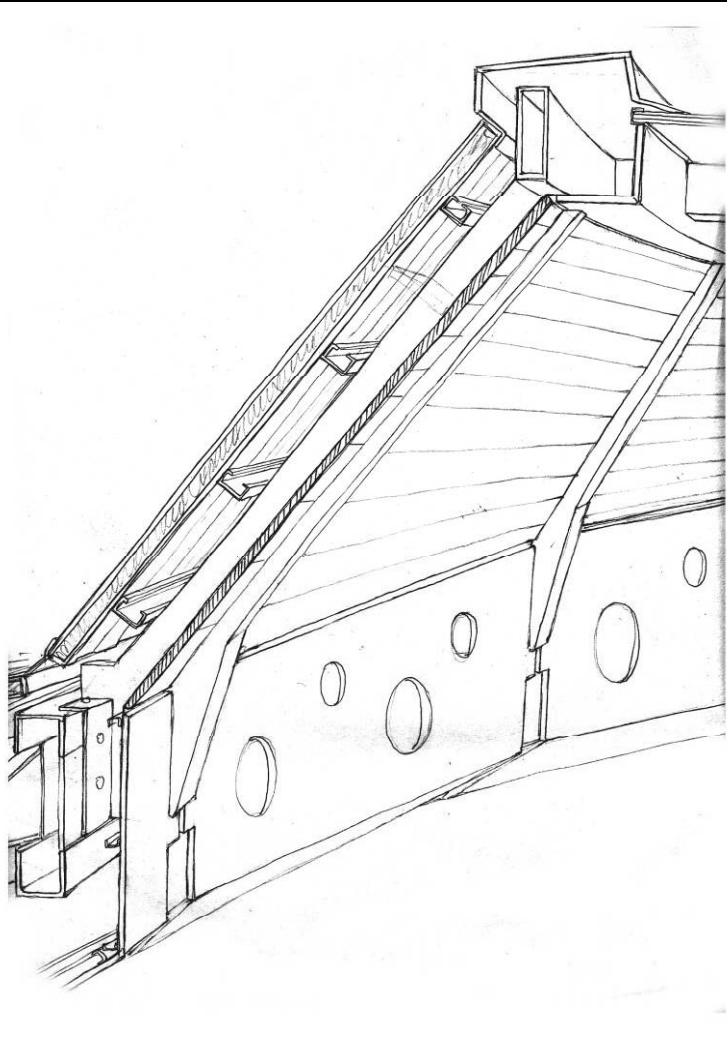
*grande, ma, rispetto
di 100,00, in un punto
approssimativo al centro
con il colore e con l'ac-
qua, proprio una fig-
ura che si muove molto
lento e piano e molto
E come si muove di casa
che è errata!*



Alle de Humahuaca.
Vista in Humahuaca.

CROQUIS:

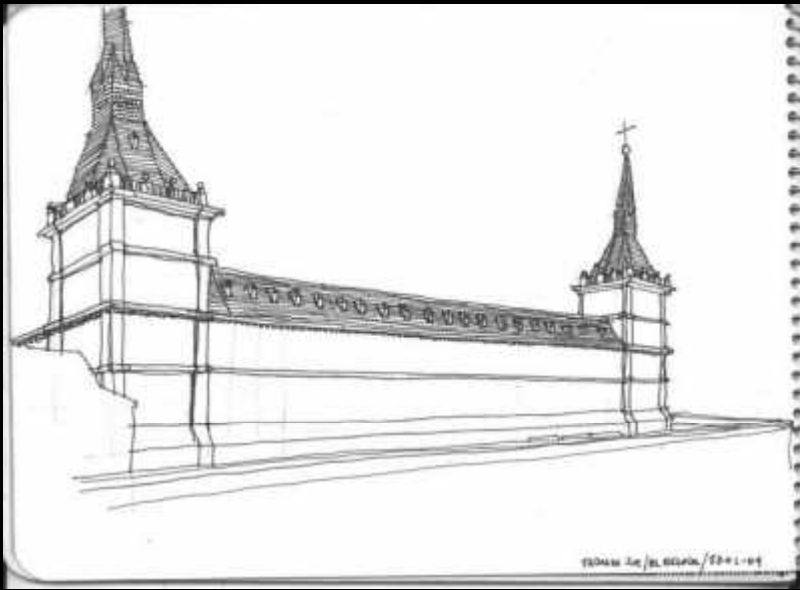
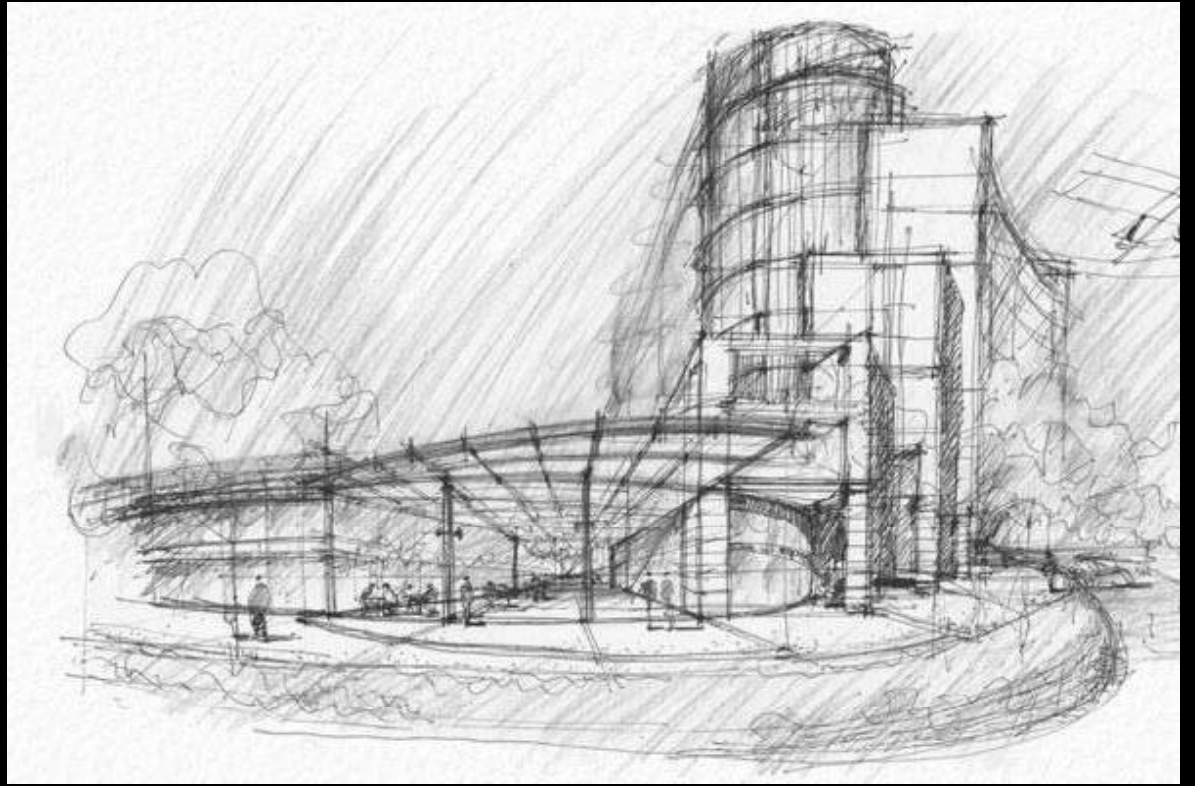
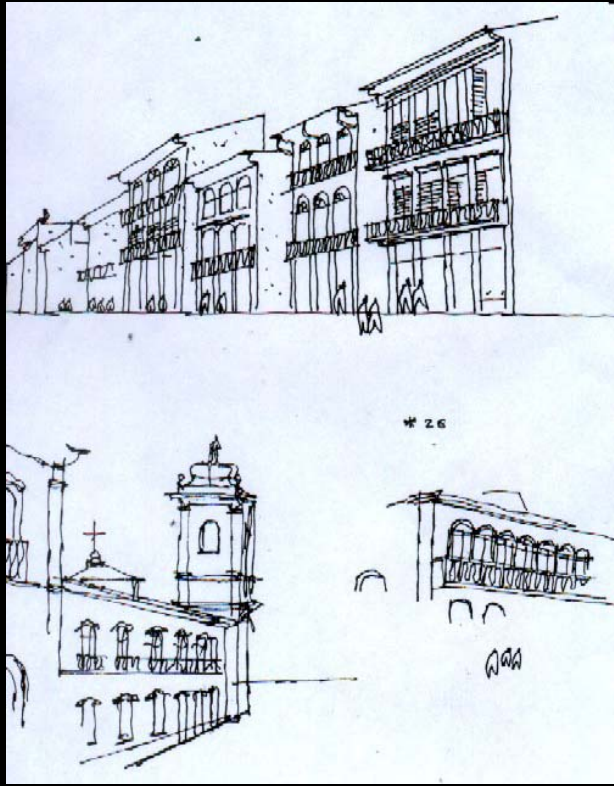
CROQUIS EN DISTINTAS ESCALAS

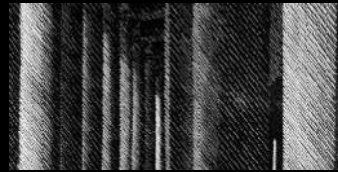


CROQUIS:

CORTE PERSPECTIVADO

CROQUIS:

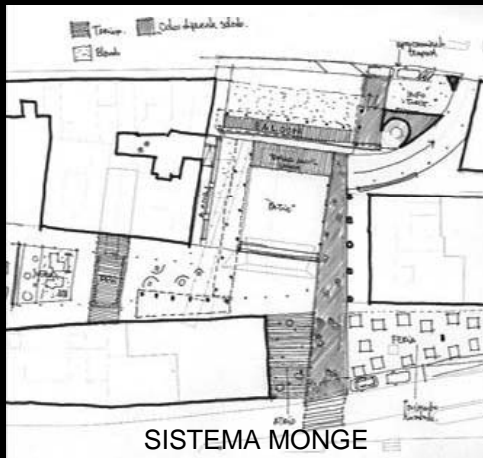




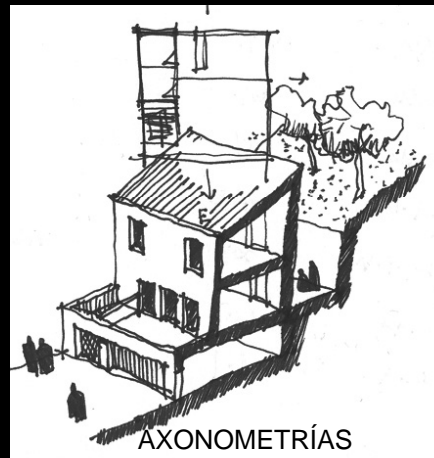
TRAZADOS

EN RELACIÓN CON EL SISTEMA GRÁFICO

“Es necesario comprender los principios básicos del código en que se está operando y las modalidades de trabajo que esta forma de dibujo impone”



SISTEMA MONGE



AXONOMETRÍAS



PERSPECTIVAS

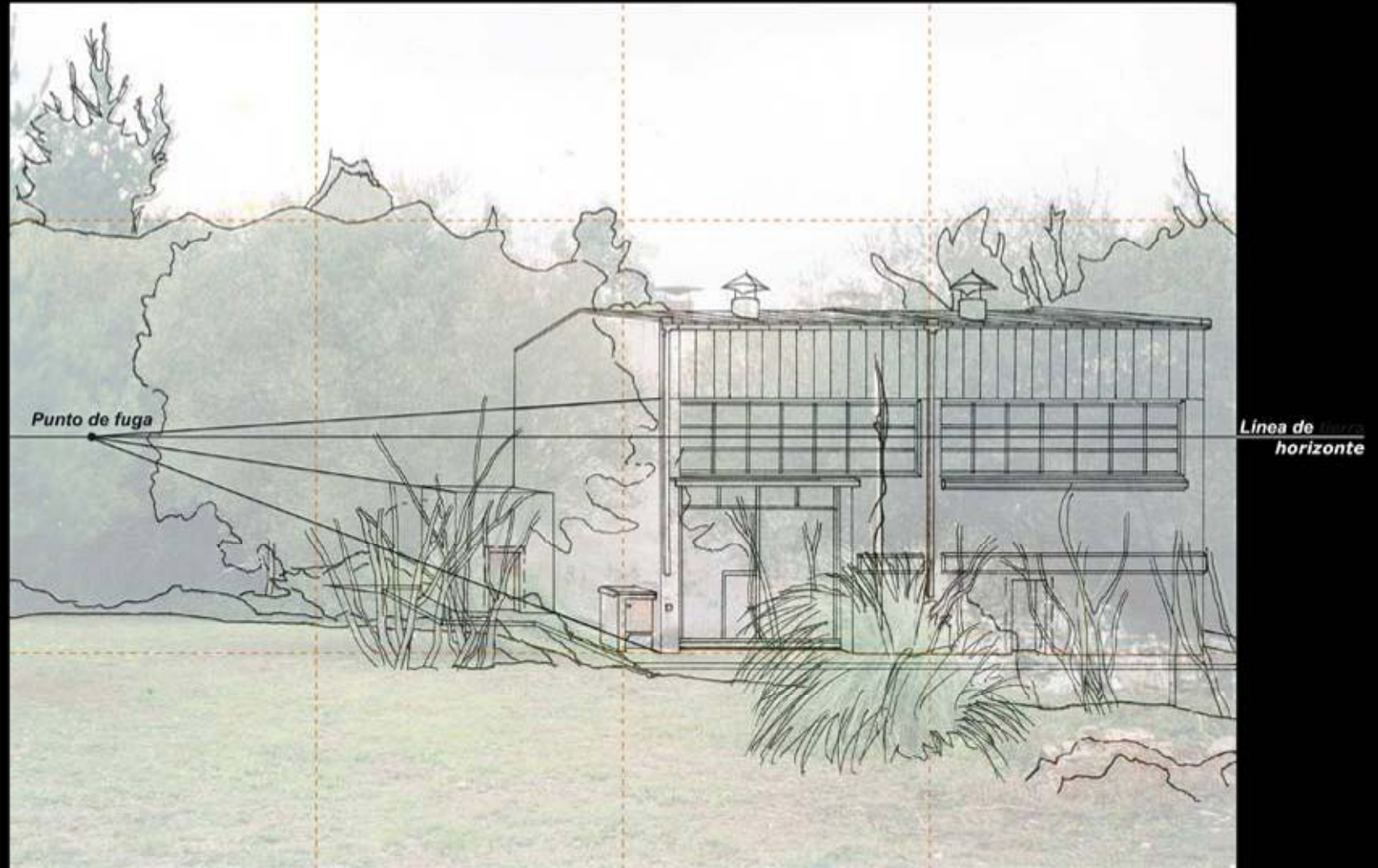
CROQUIS:

En el dibujo en croquis es fundamental la observación y definición de las proporciones

El croquis en perspectiva

Recompone la "imagen visual"

ES NECESARIO ESTABLECER LA RELACIÓN ENTRE EL "SUJETO" QUE OBSERVA Y EL "OBJETO" OBSERVADO



□ En el dibujo en croquis es fundamental la observación y definición de las proporciones

El croquis en perspectiva

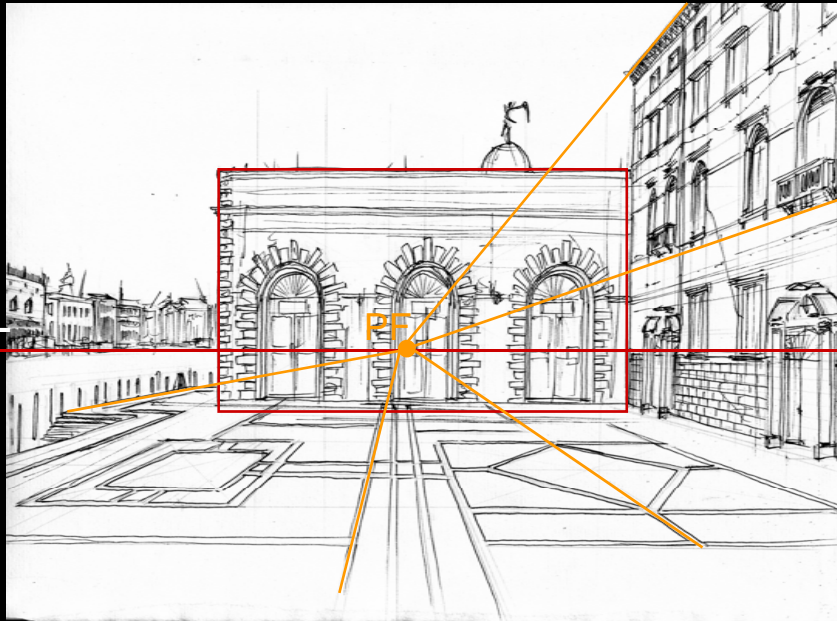


Recompone la "imagen visual"



DE ACUERDO A LA POSICIÓN DEL OBSERVADOR SE PUEDEN CLASIFICAR EN

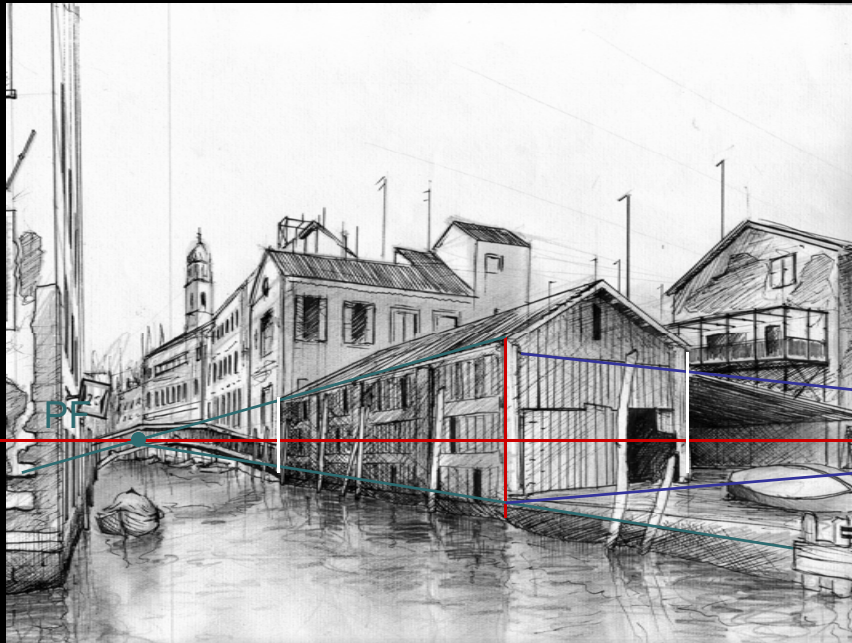
FRONTAL



LH

CON 1 PUNTO DE FUGA

OBLICUA

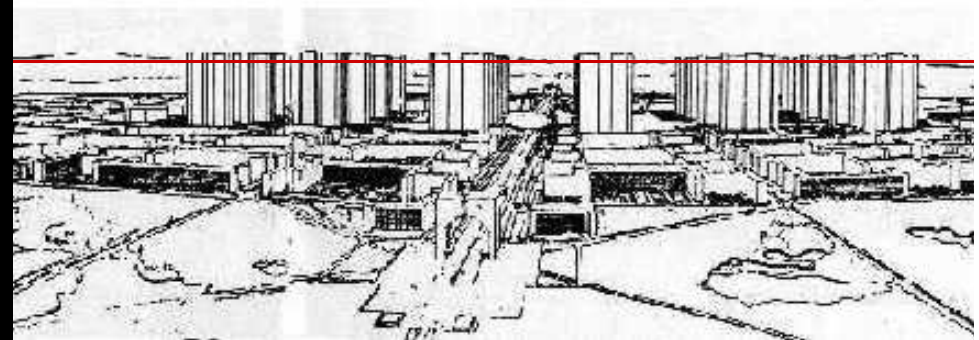
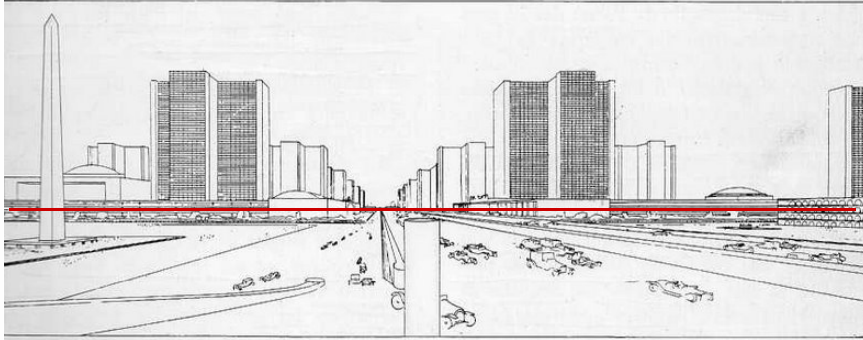


LH

CON 2 O MÁS PUNTOS DE FUGA

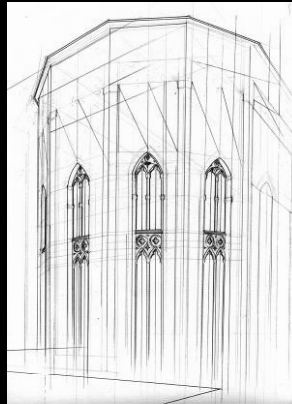
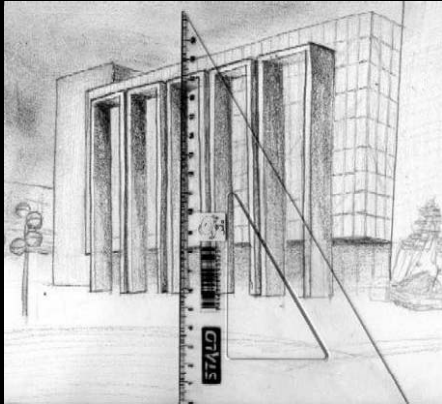
PF

❑ LA LÍNEA DE HORIZONTE (LH) SE UBICA A LA ALTURA DEL OBSERVADOR

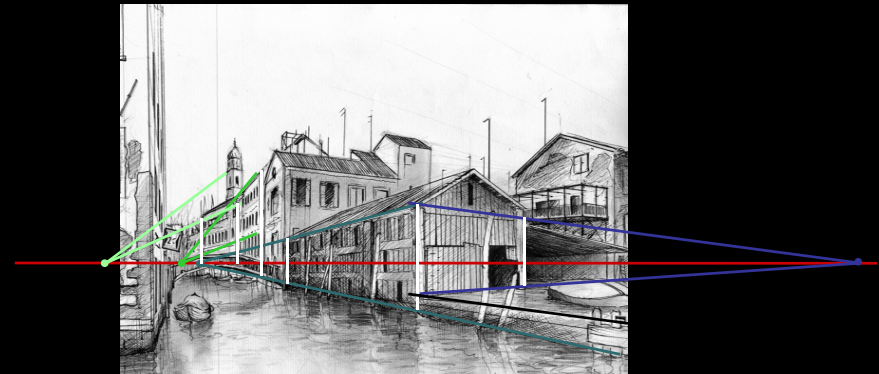
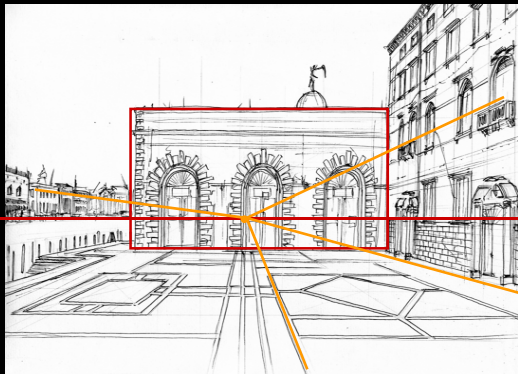


❑ LAS VERTICALES SE MANTIENEN VERTICALES

CON EXCEPCIONES

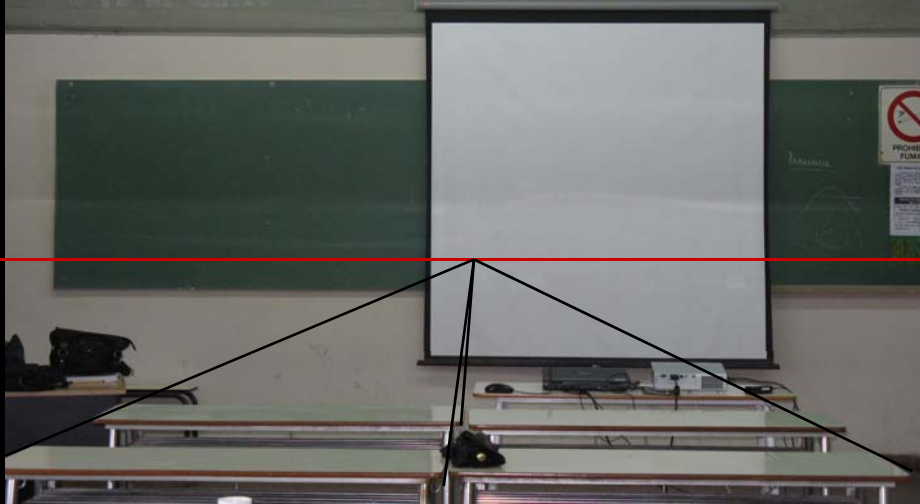


❑ RECTAS PARALELAS EN EL ESPACIO FUGAN A UN MISMO PUNTO DE FUGA (PF)

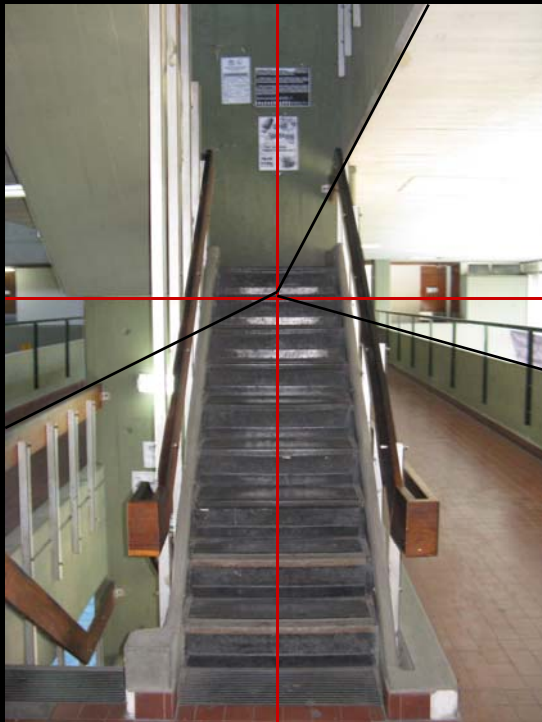


El croquis en perspectiva

SE ESTABLECE LA RELACIÓN ENTRE EL "SUJETO" QUE OBSERVA Y EL "OBJETO" OBSERVADO



Recompone la "imagen visual"



SE ESTABLECE LA RELACIÓN ENTRE EL “SUJETO” QUE OBSERVA Y EL “OBJETO” OBSERVADO

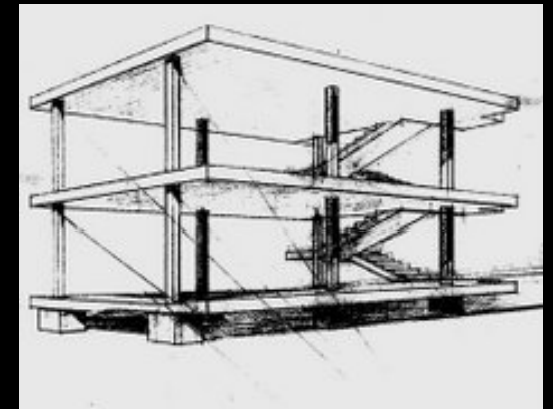
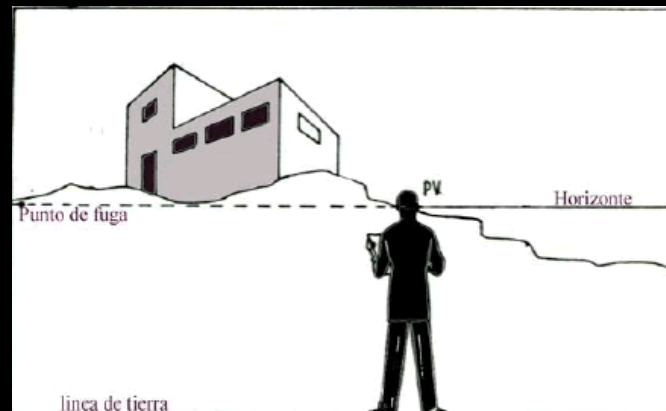
ES NECESARIO POSICIONARSE Y OBSERVAR

RECORTAR LA ESCENA QUE SE ESTÁ PERCIBIENDO

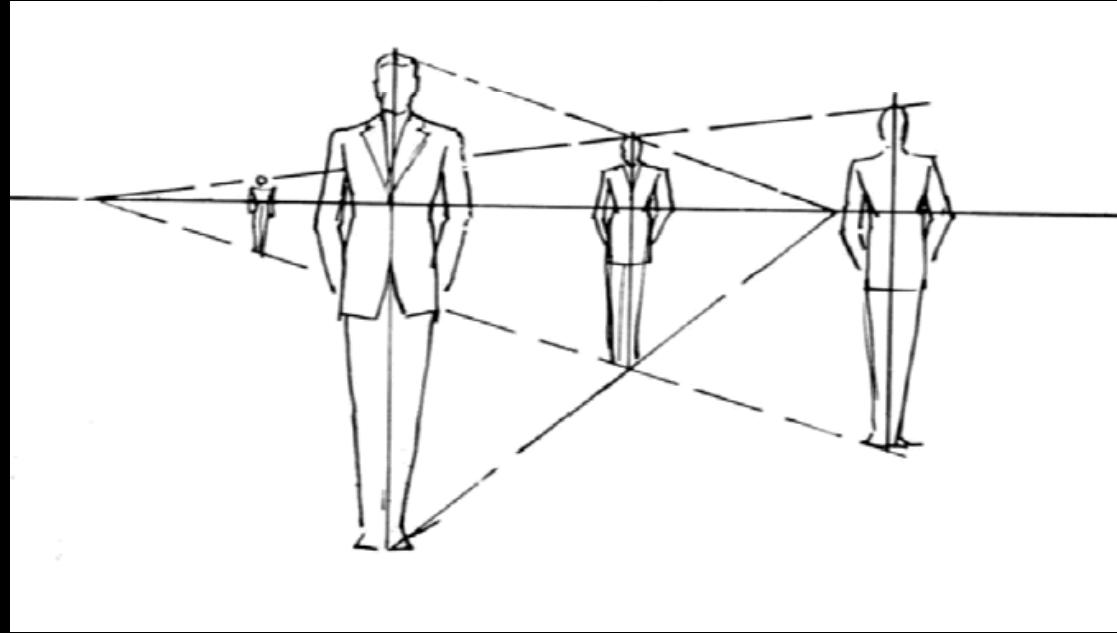


ANALIZAR LA POSICIÓN DE LOS OBJETOS EN EL ESPACIO Y

CONSIDERAR LAS REGLAS BÁSICAS DEL SISTEMA



□ LA LÍNEA DE HORIZONTE (LH) SE UBICA A LA ALTURA DEL OBSERVADOR



CROQUIS:

□ LAS VERTICALES SE MANTIENEN VERTICALES

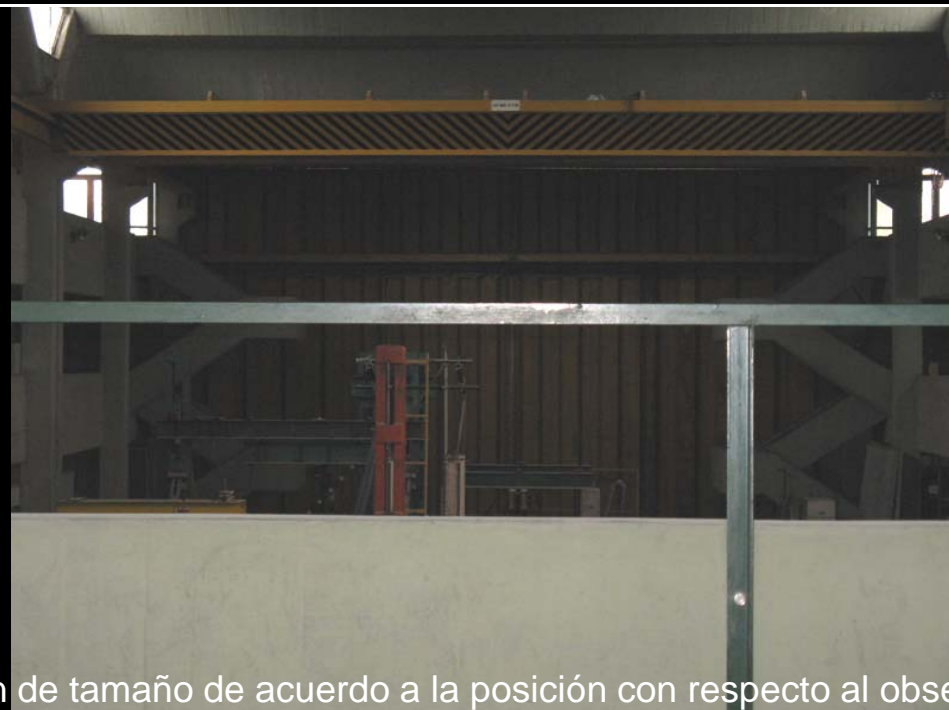


CROQUIS:

□ LA LÍNEA DE HORIZONTE (LH) SE UBICA A LA ALTURA DEL OBSERVADOR

□ En el dibujo en croquis es fundamental la observación y definición de las PROPORCIONES

CROQUIS:



□ Los objetos varían de tamaño de acuerdo a la posición con respecto al observador

CROQUIS:



CROQUIS:



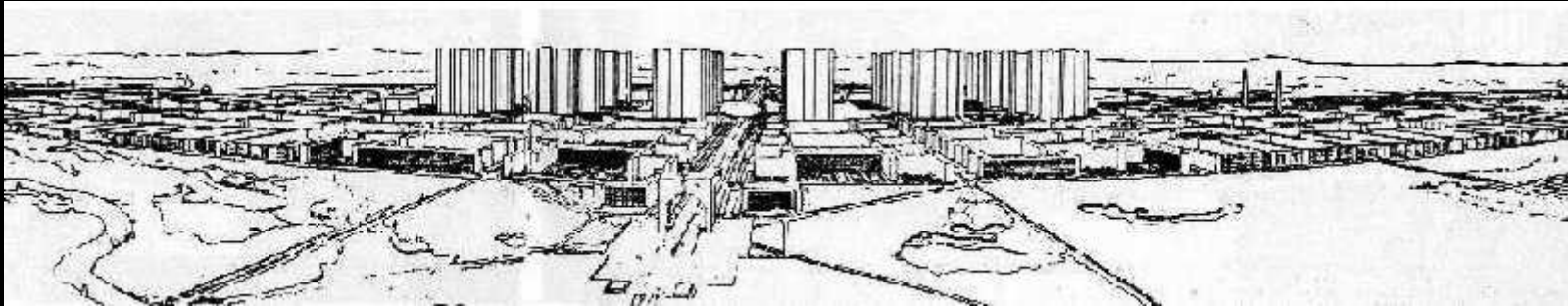
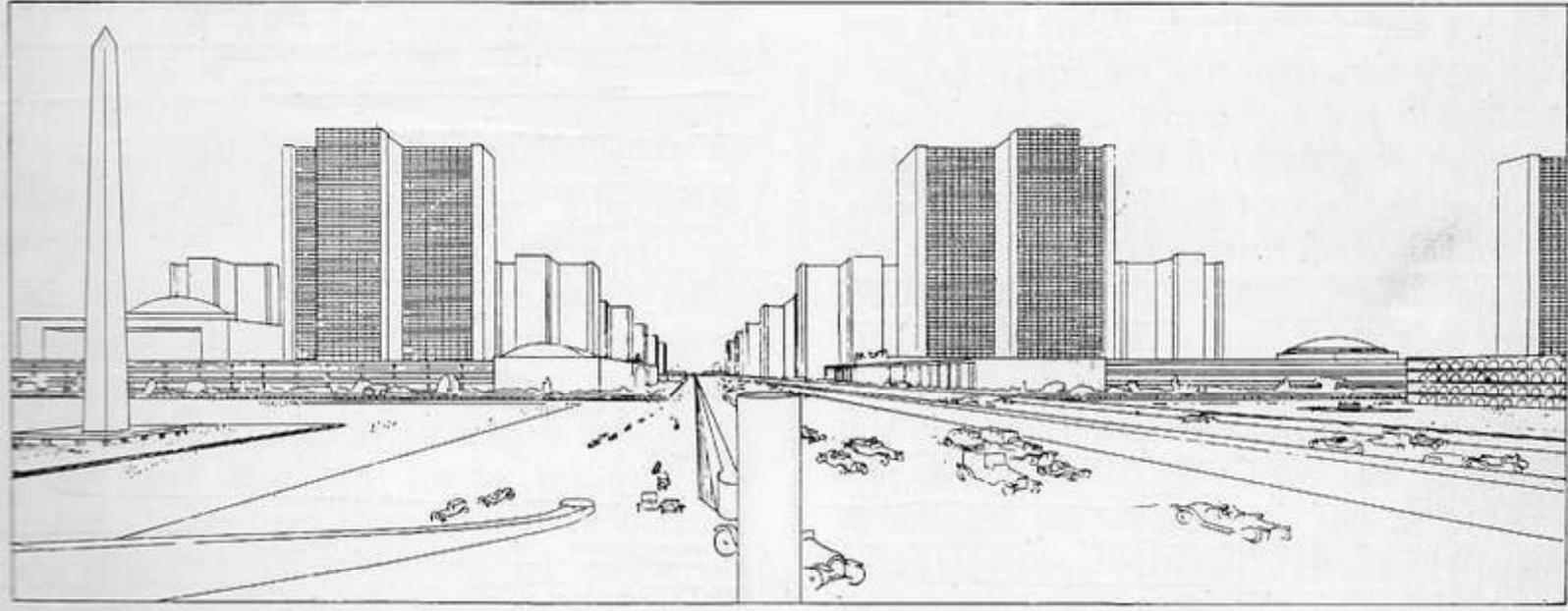
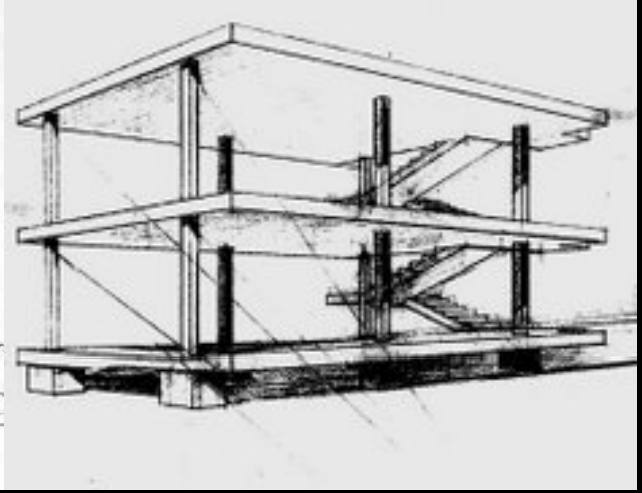
CROQUIS:



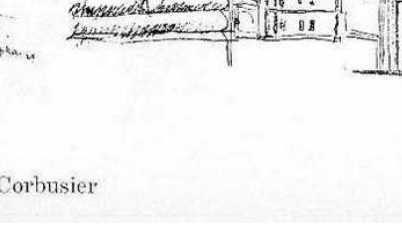
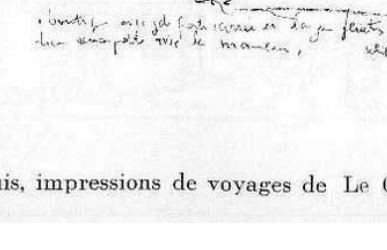
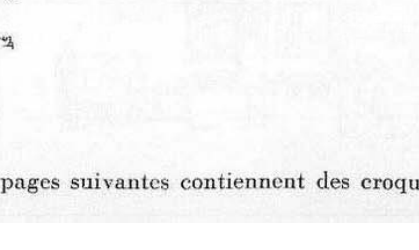
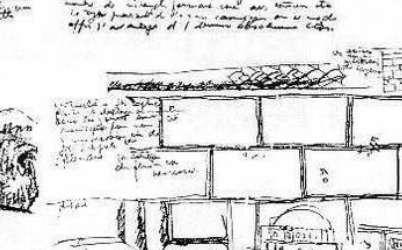
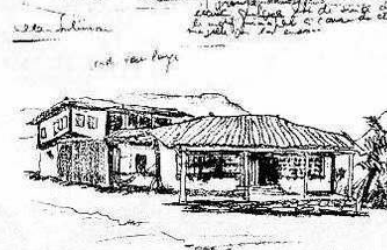
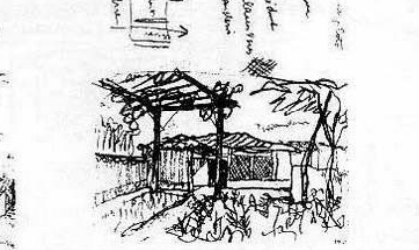
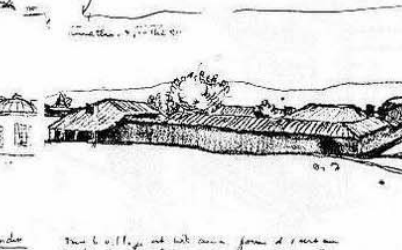
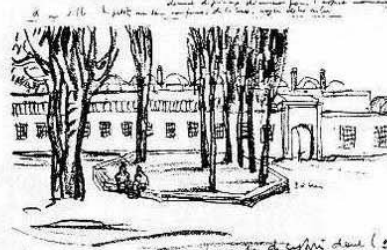
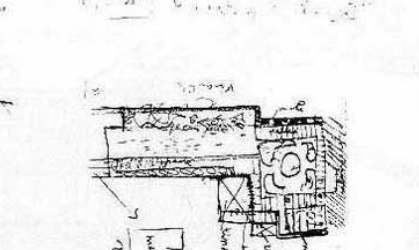
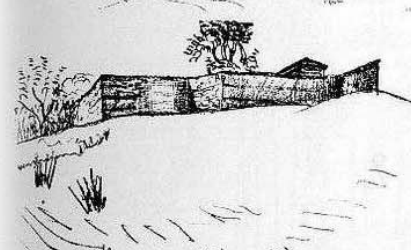
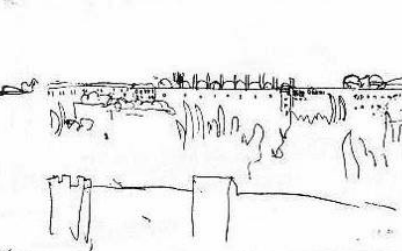
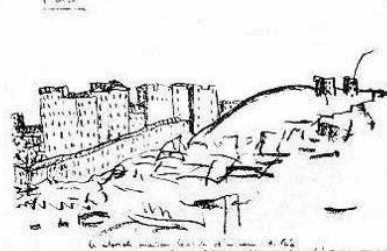
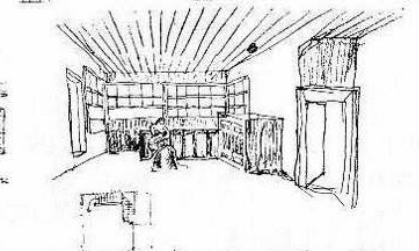
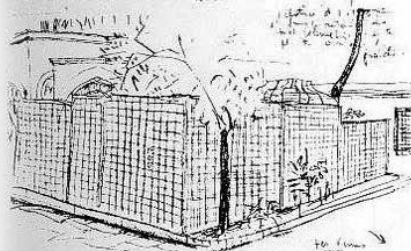
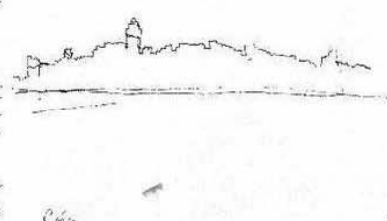
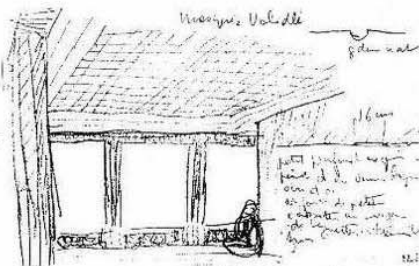
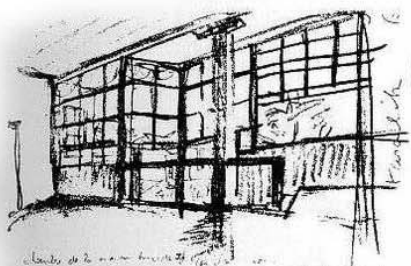
CROQUIS:



CROQUIS:



LE CORBUSIER

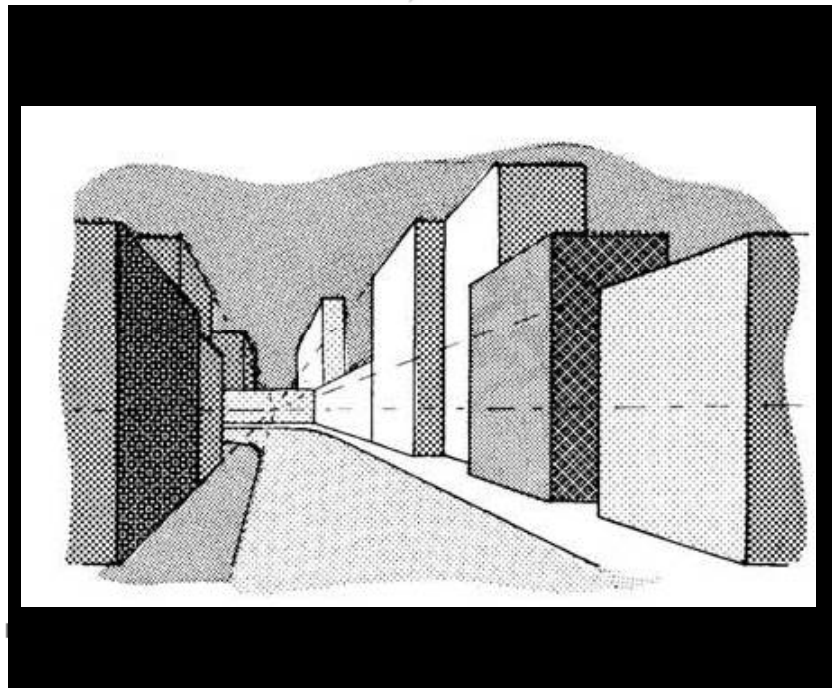


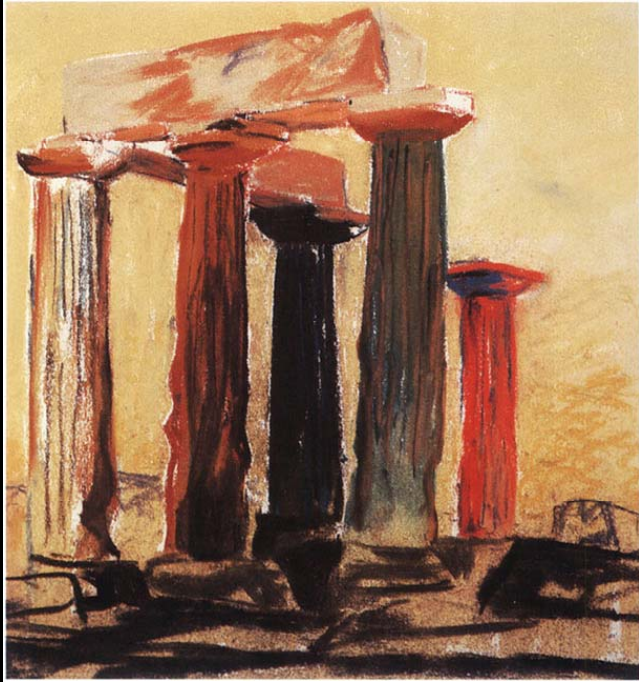


La calle Humberto I^o, subiendo a San Telmo.
The street Humberto I^o, up to San Telmo Square.



Arq. Minond





TEMPLO DE APOLO



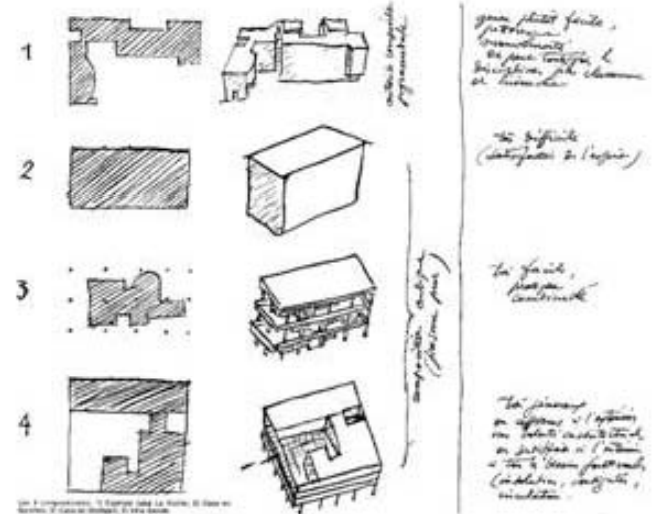
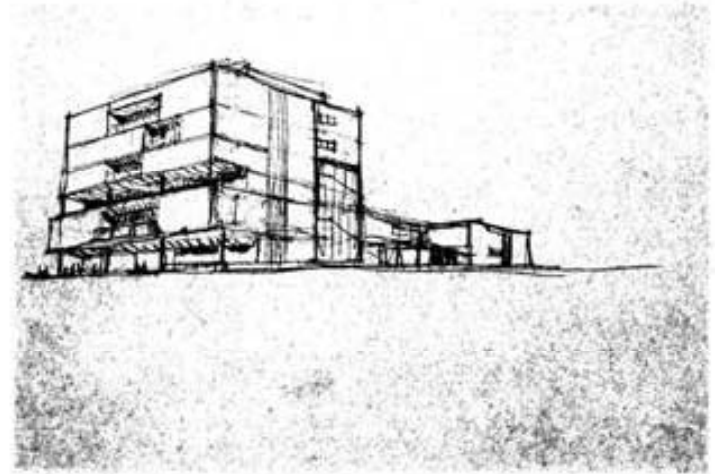
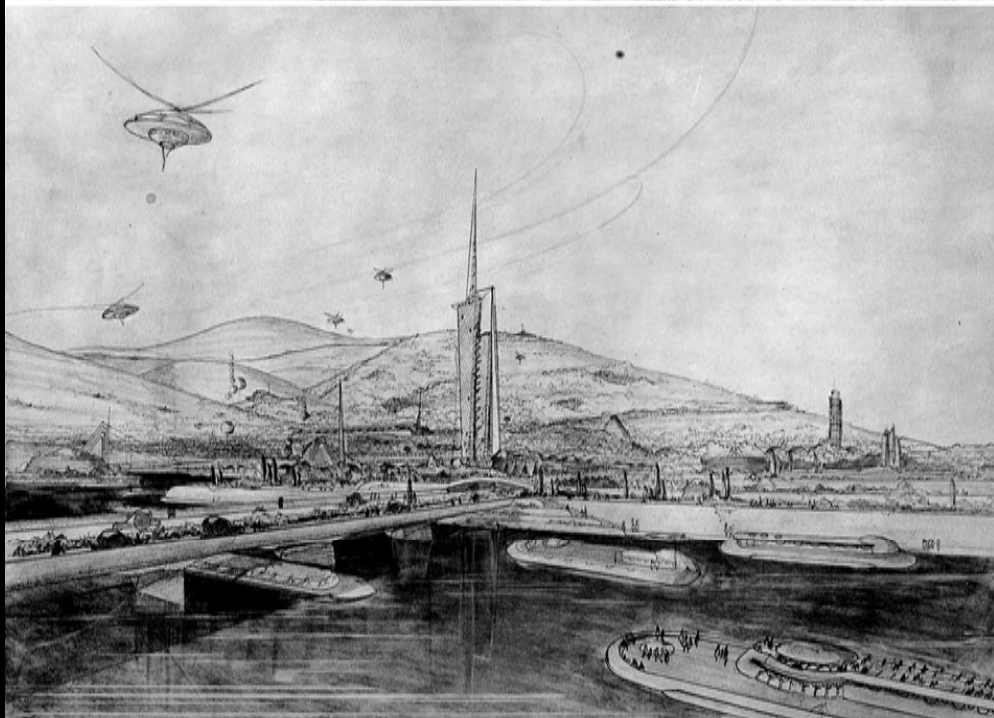
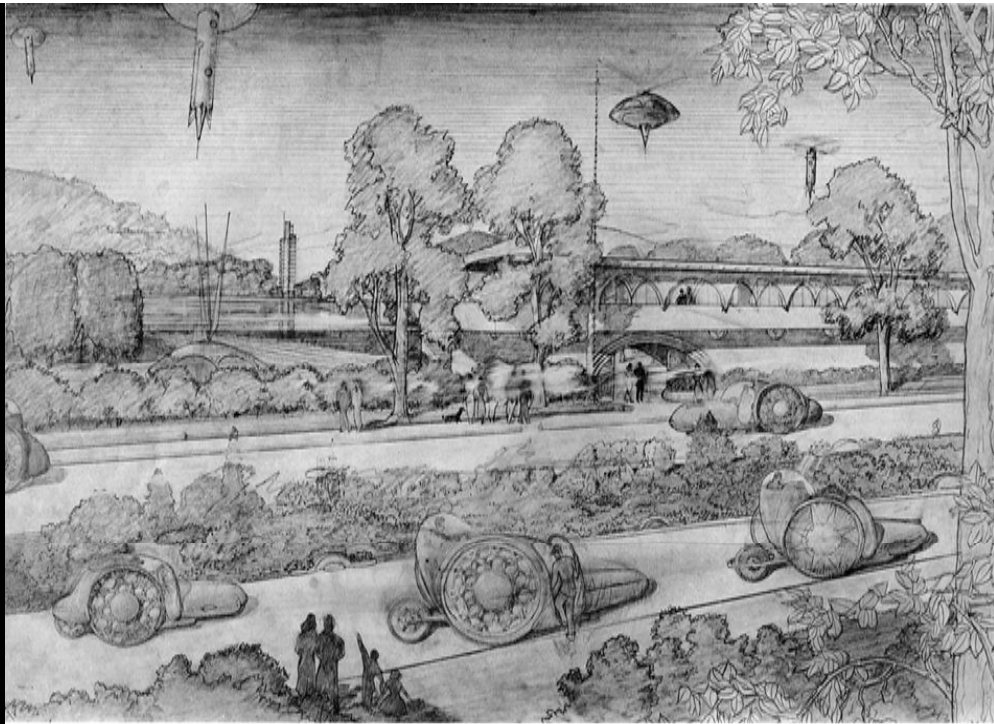
SAN MARCOS EN VENEZIA

Arq. Louis Kahn



ACROPOLIS

CROQUIS:



CROQUIS:

