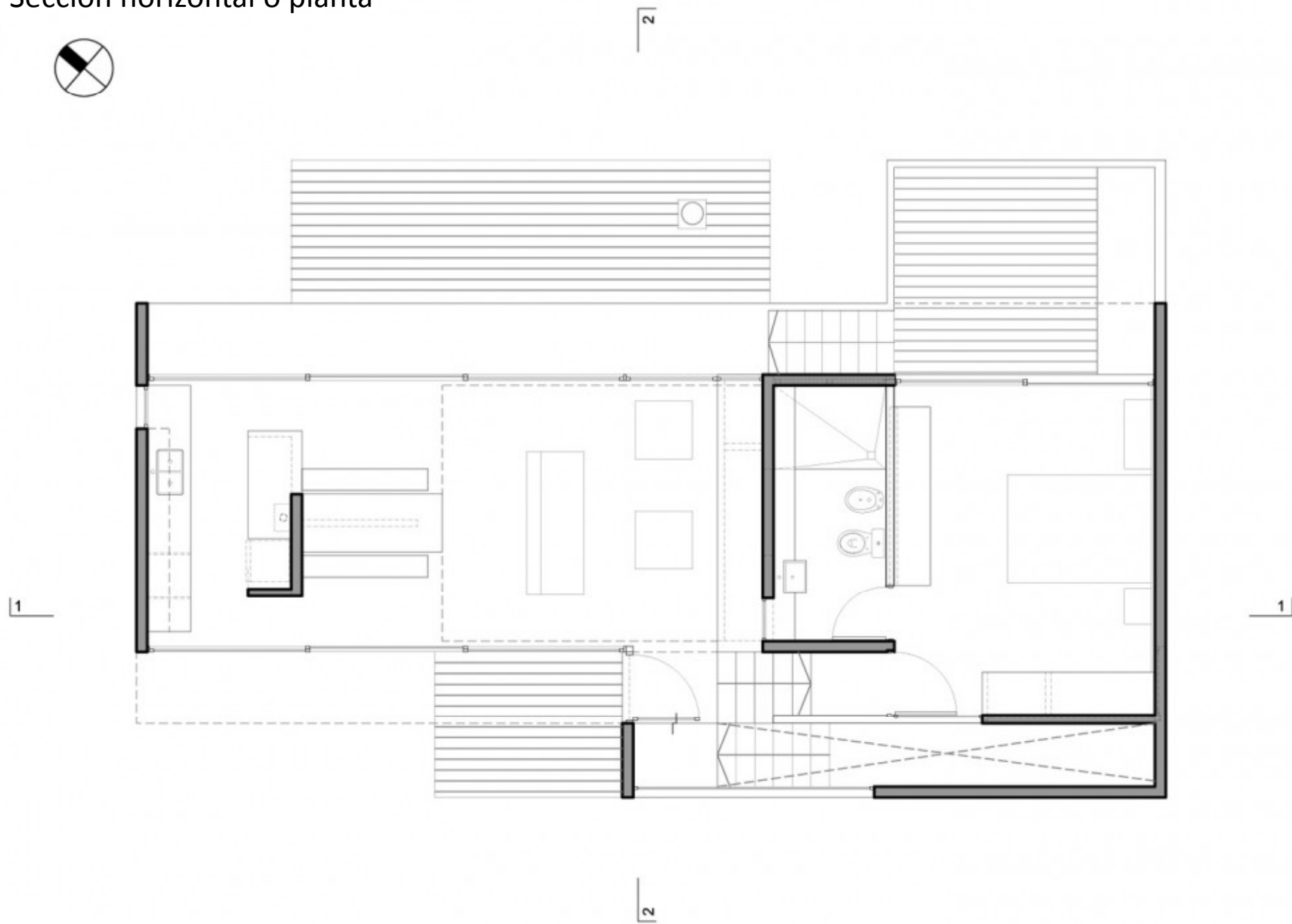


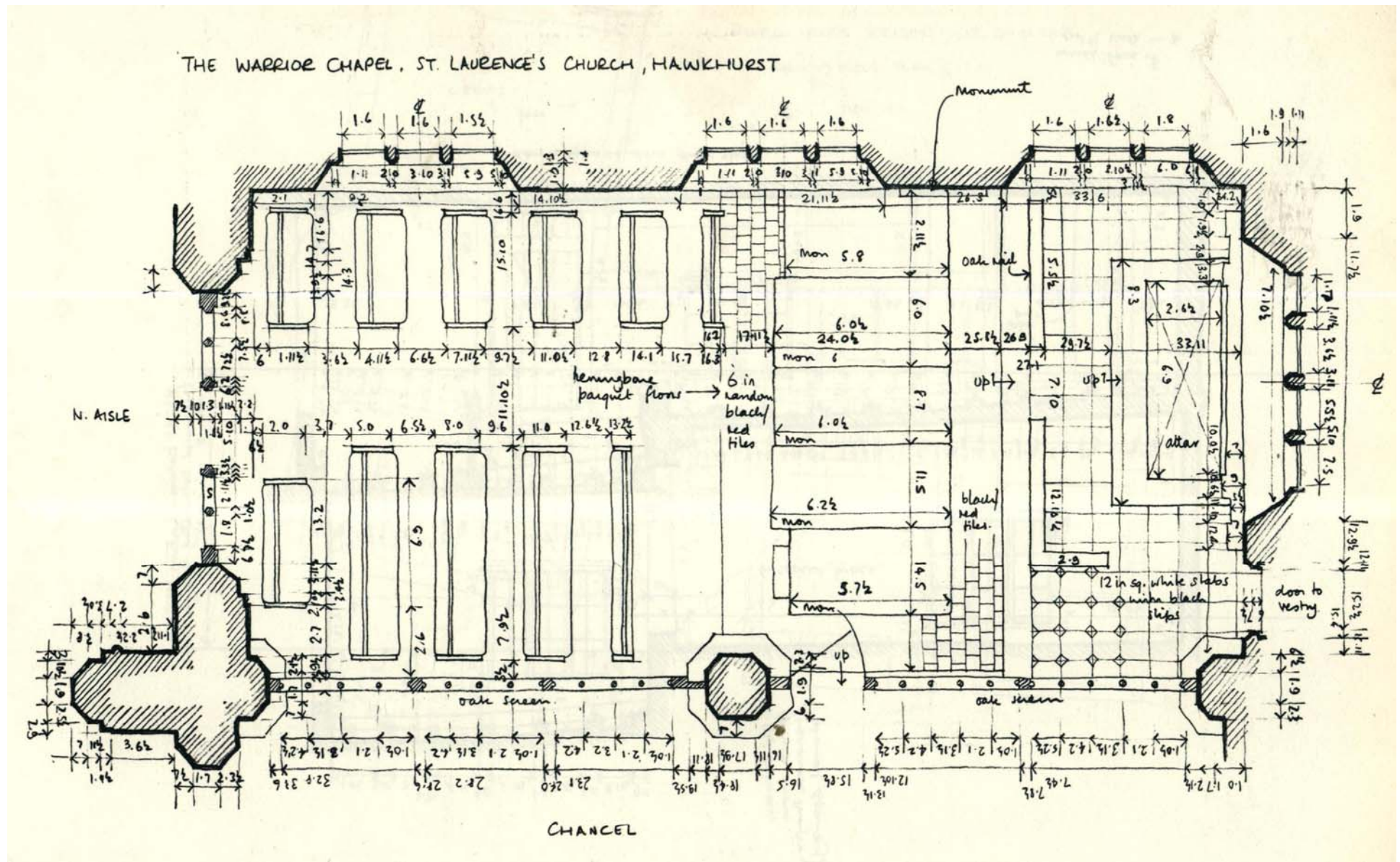
C3.22.1

2. Los códigos del dibujo

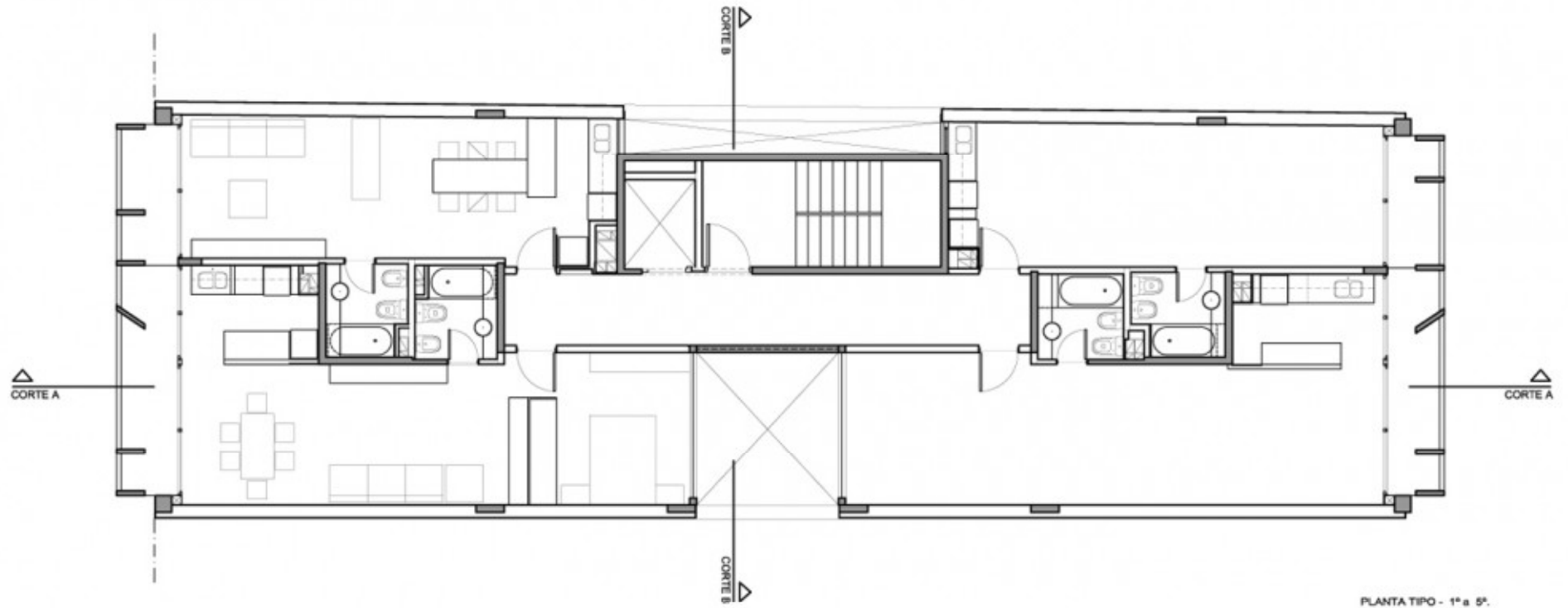
Sección horizontal o planta



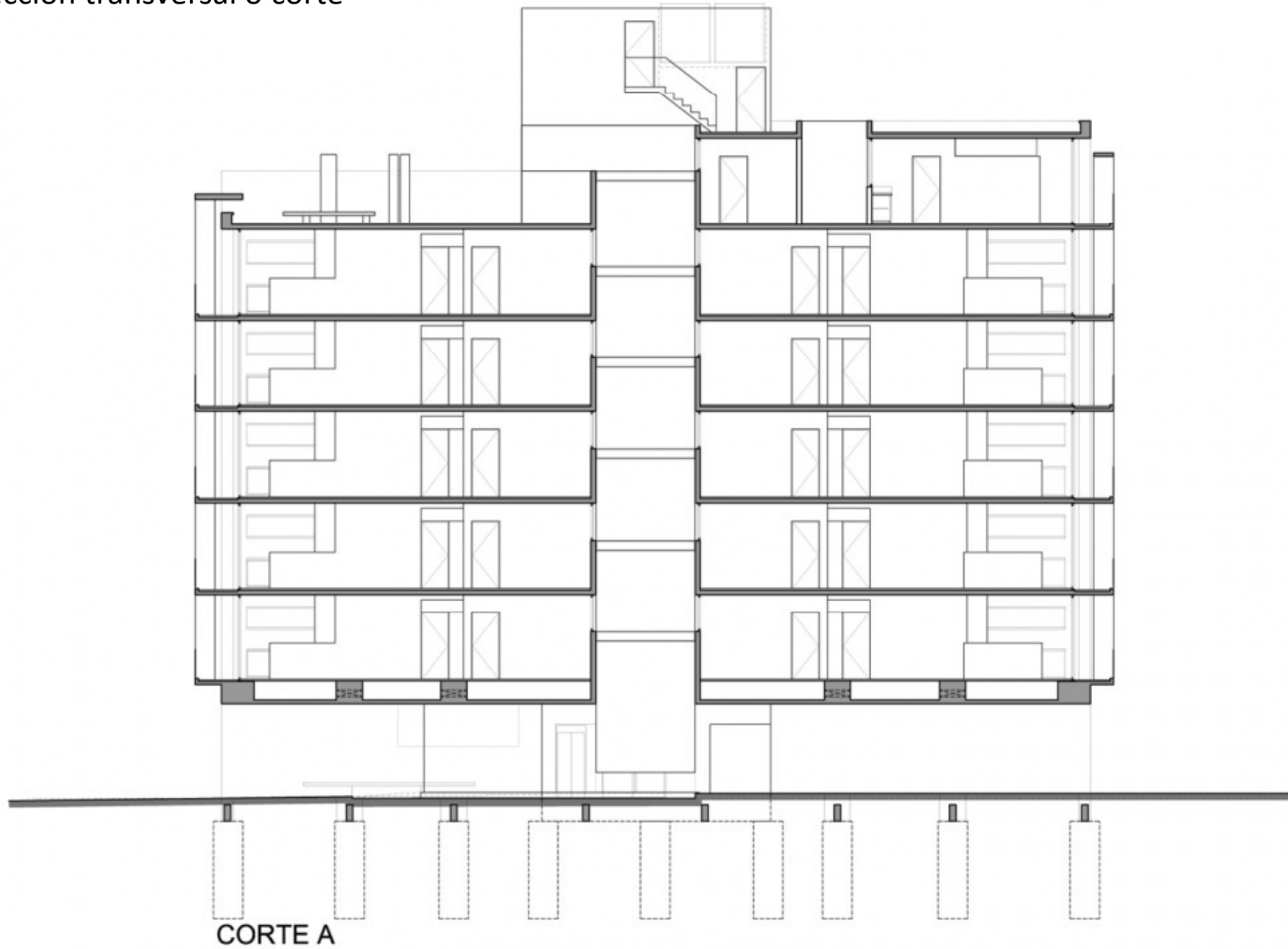
Sección horizontal o planta



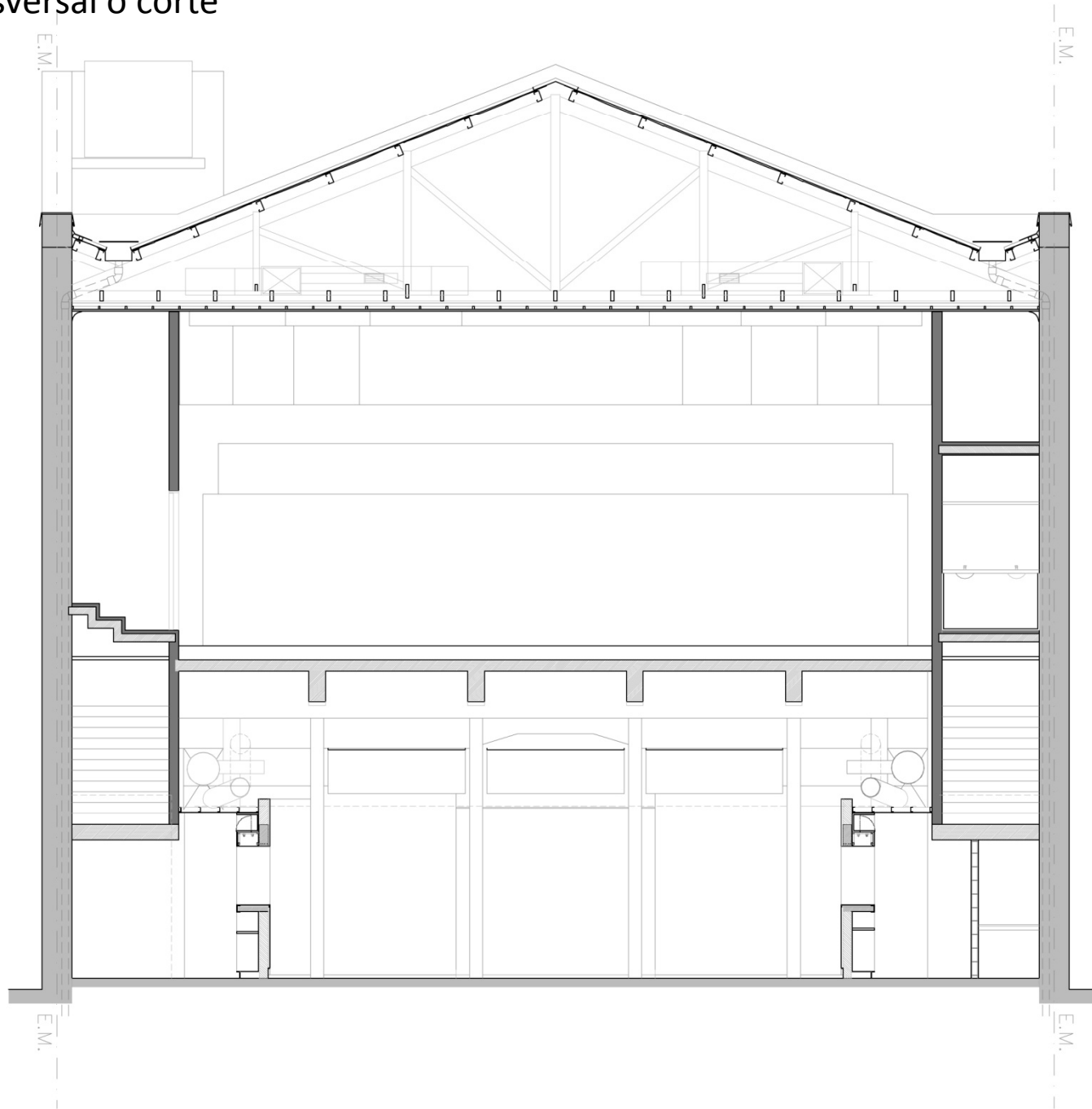
Sección horizontal o planta



Sección transversal o corte



Sección transversal o corte

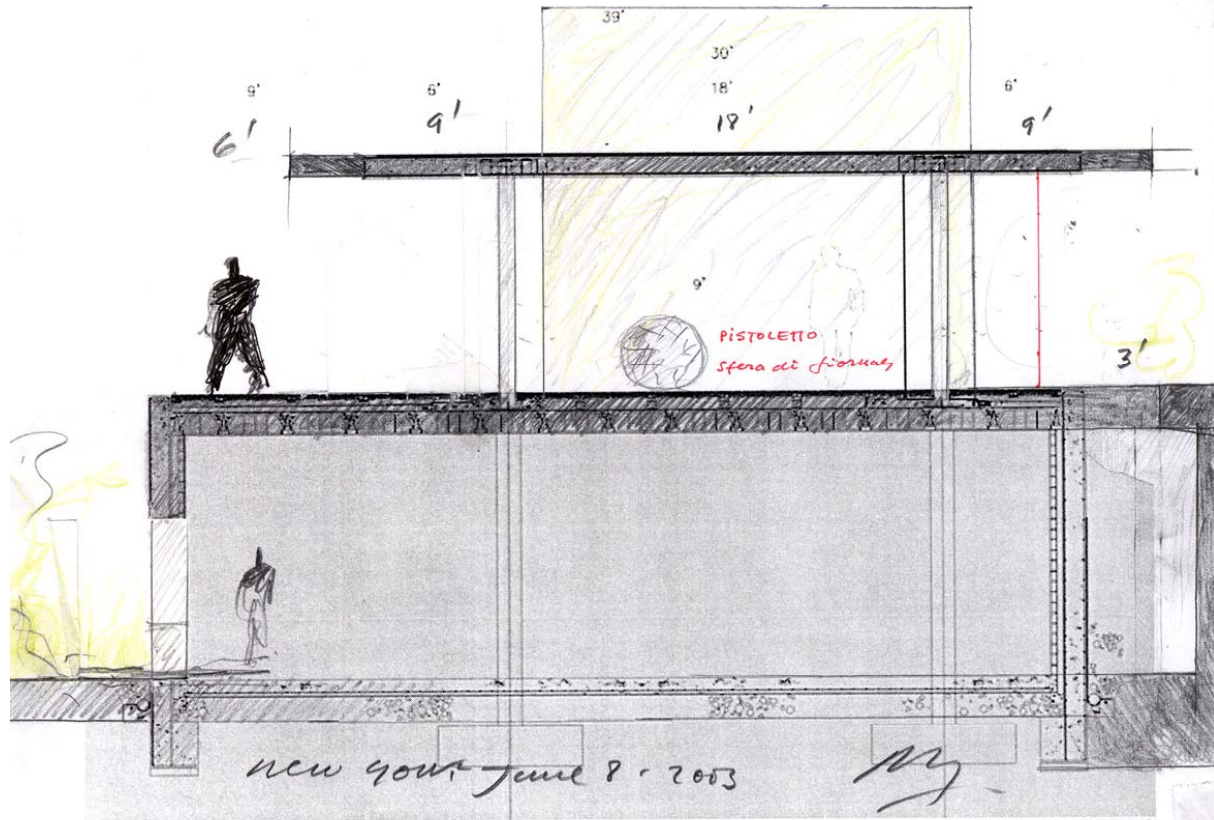


Sección transversal o corte

12

Untitled Document

Page 2 of 2

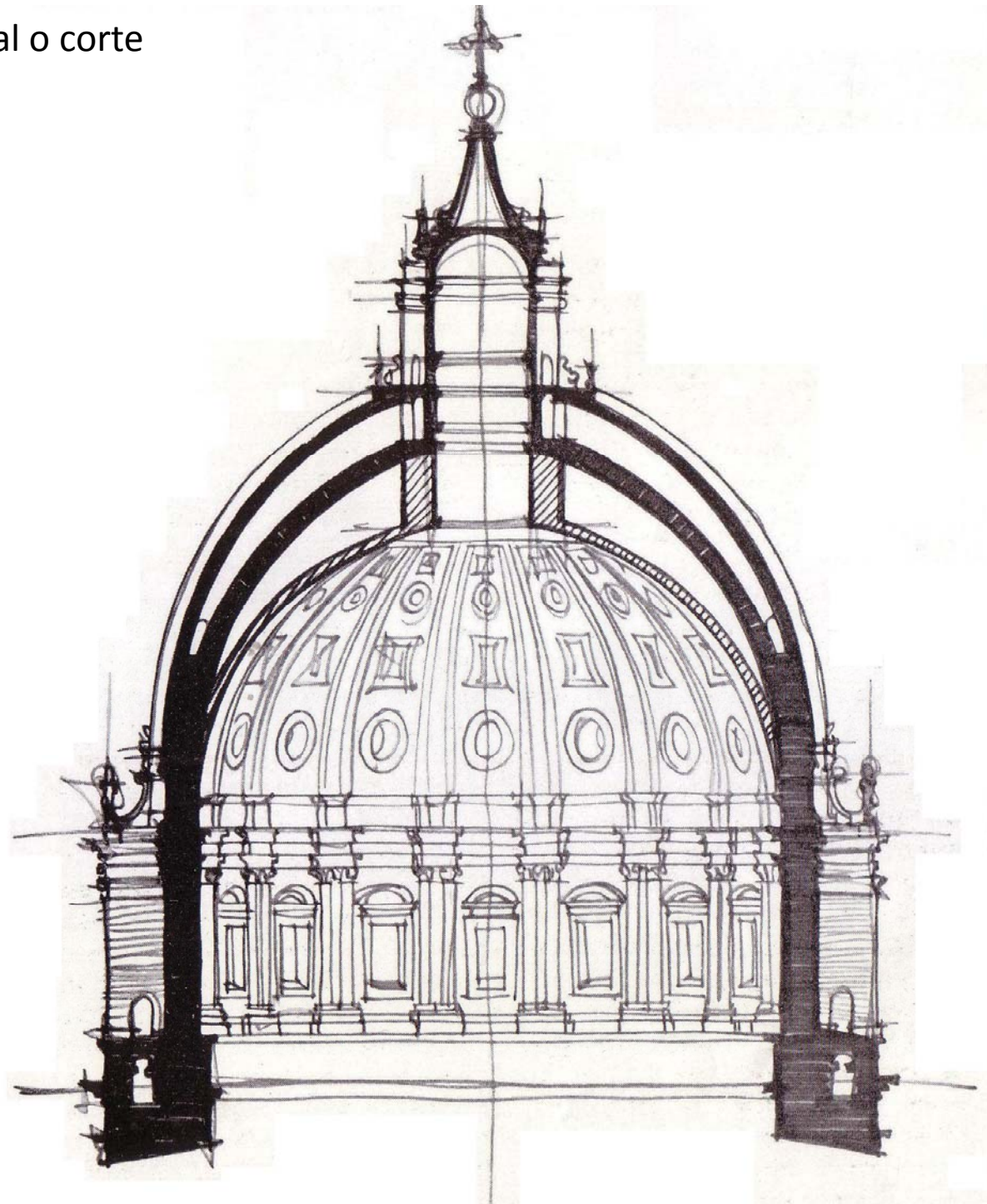


PRINTABLE SHEETS

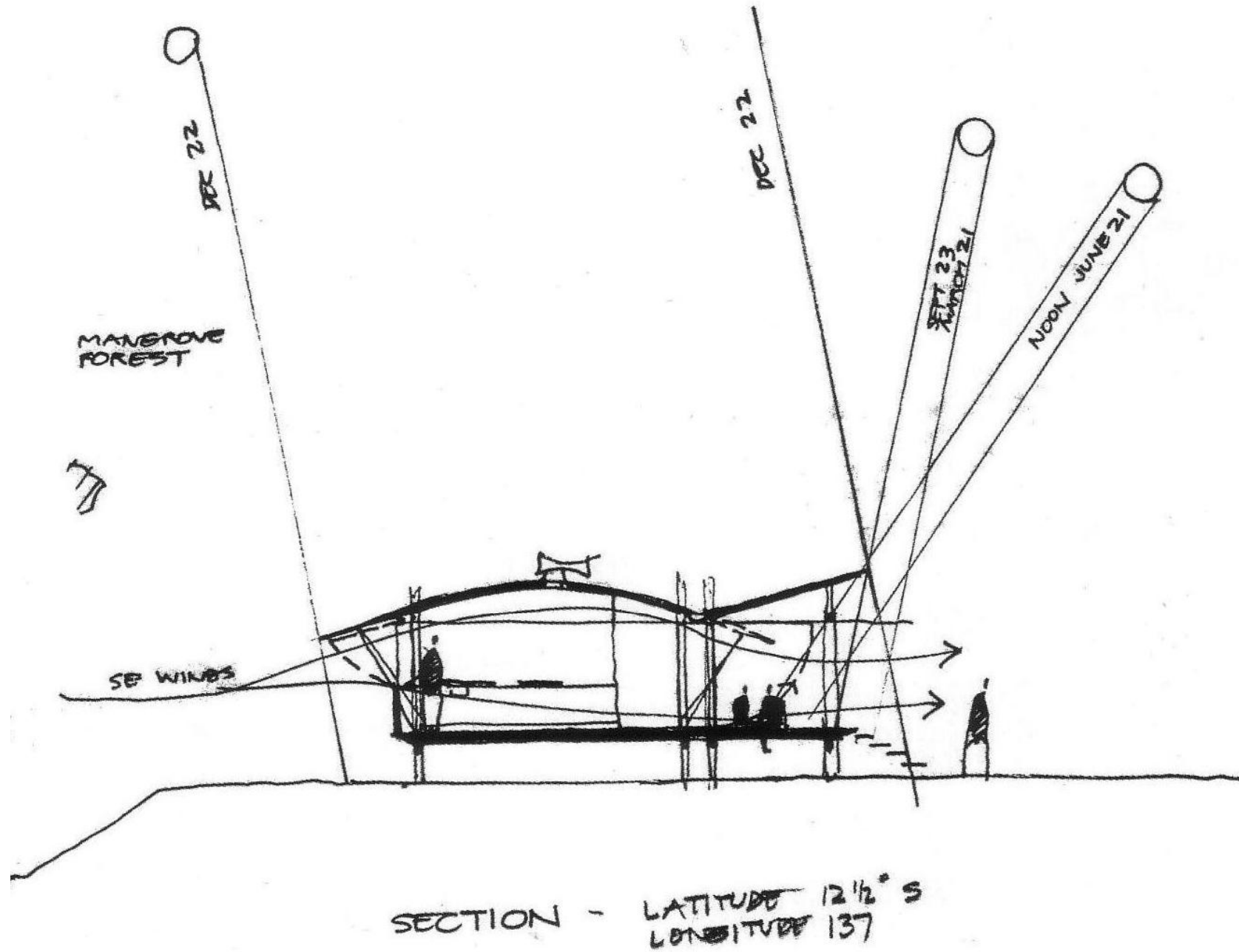
OLNICK-SPANN HOUSE
GANNON



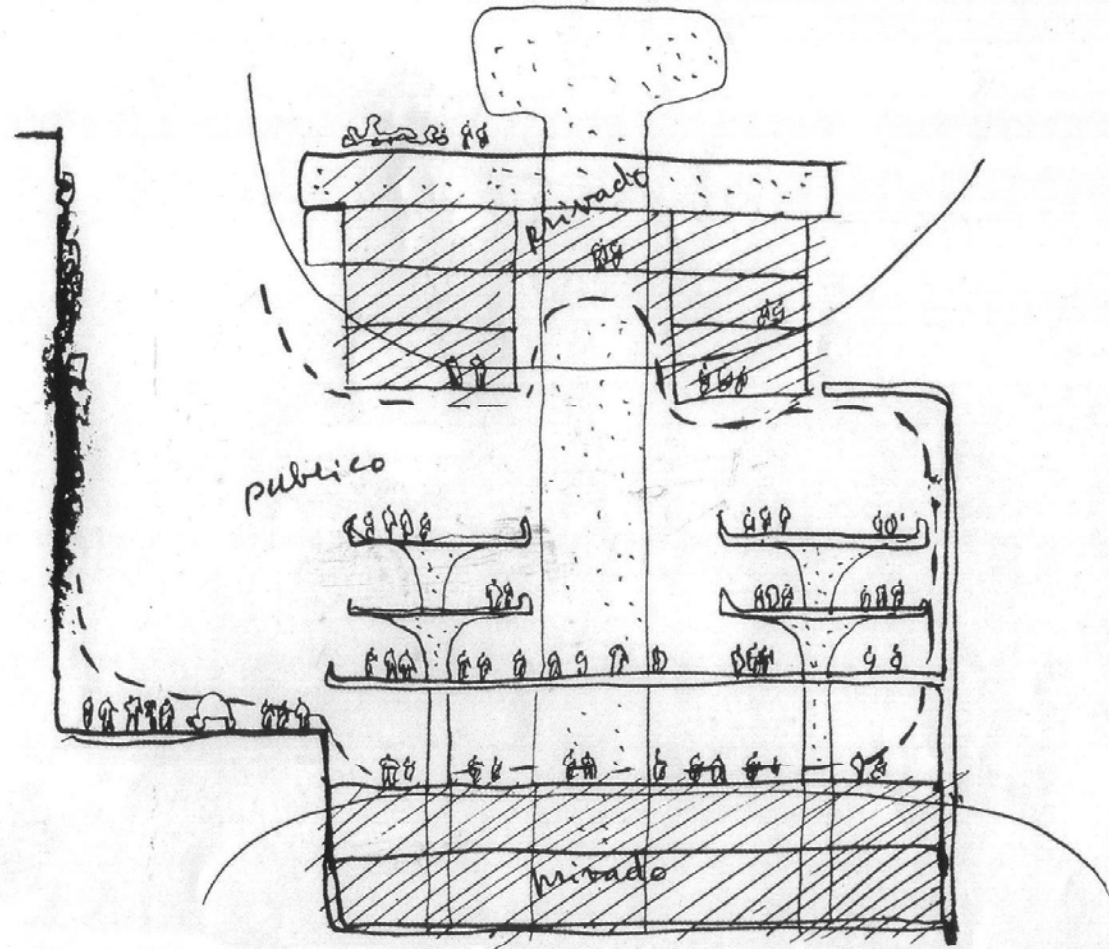
Sección transversal o corte



Sección transversal esquemática o corte esquemático

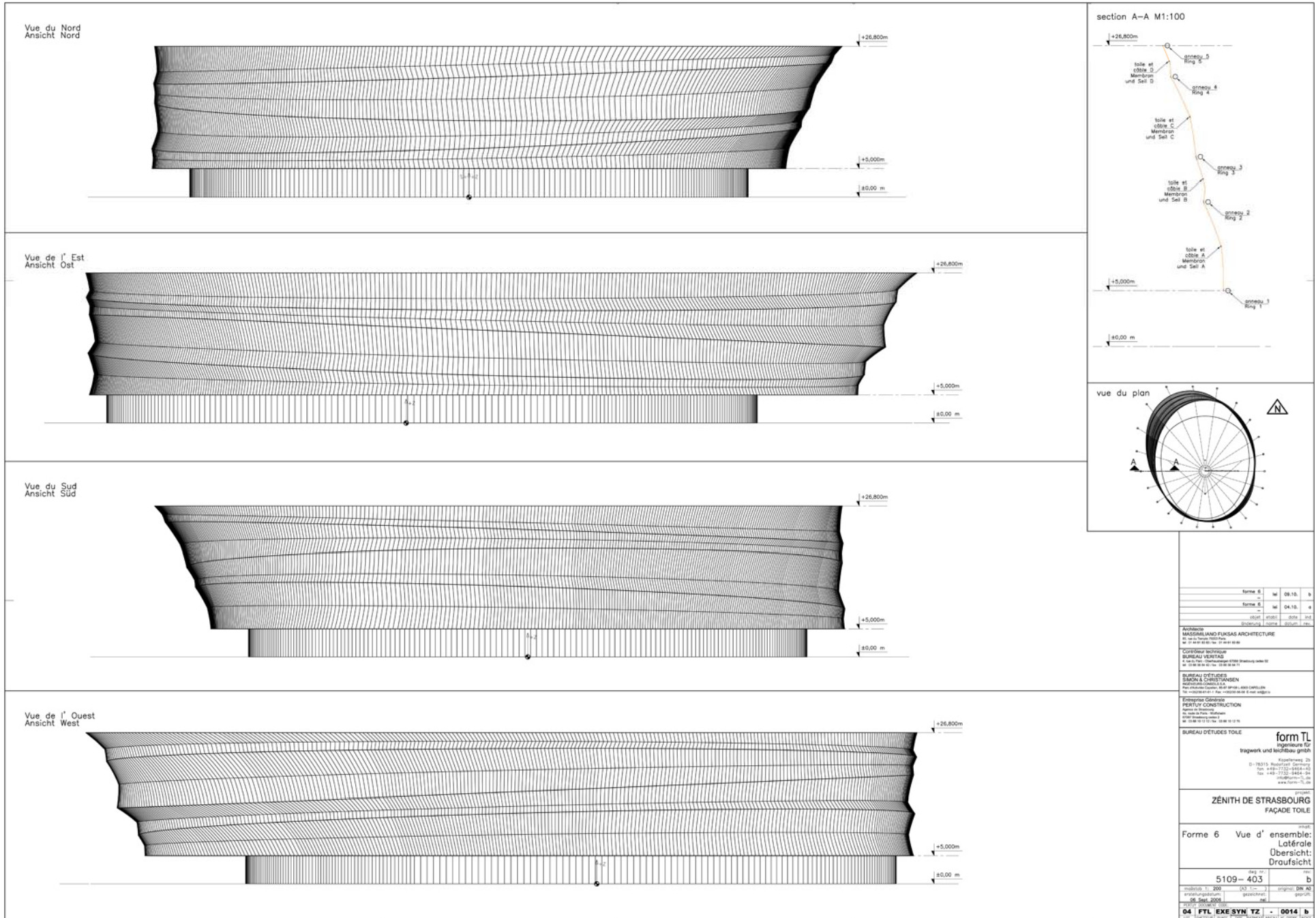


Sección transversal esquemática o corte esquemático

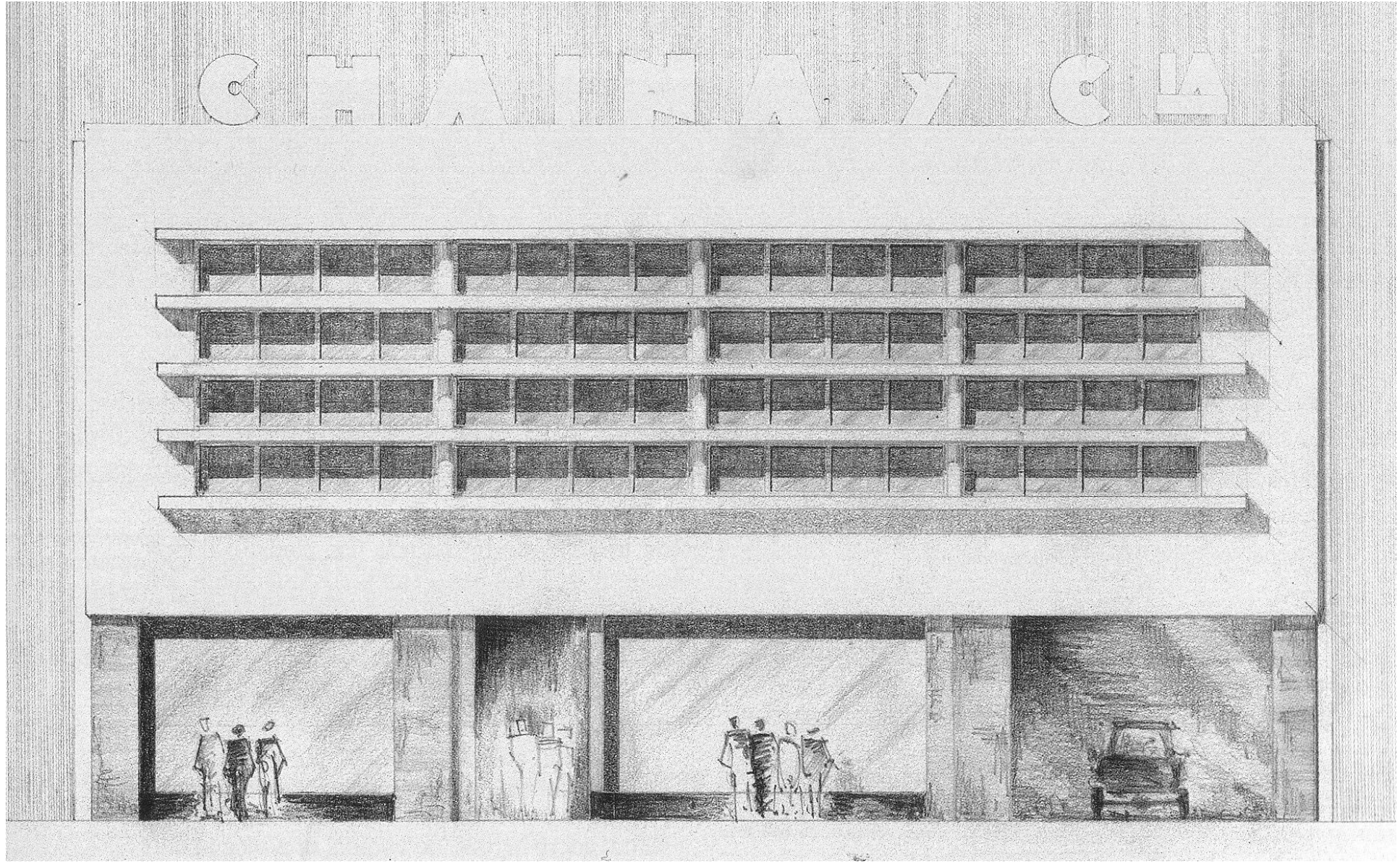


dominio terro

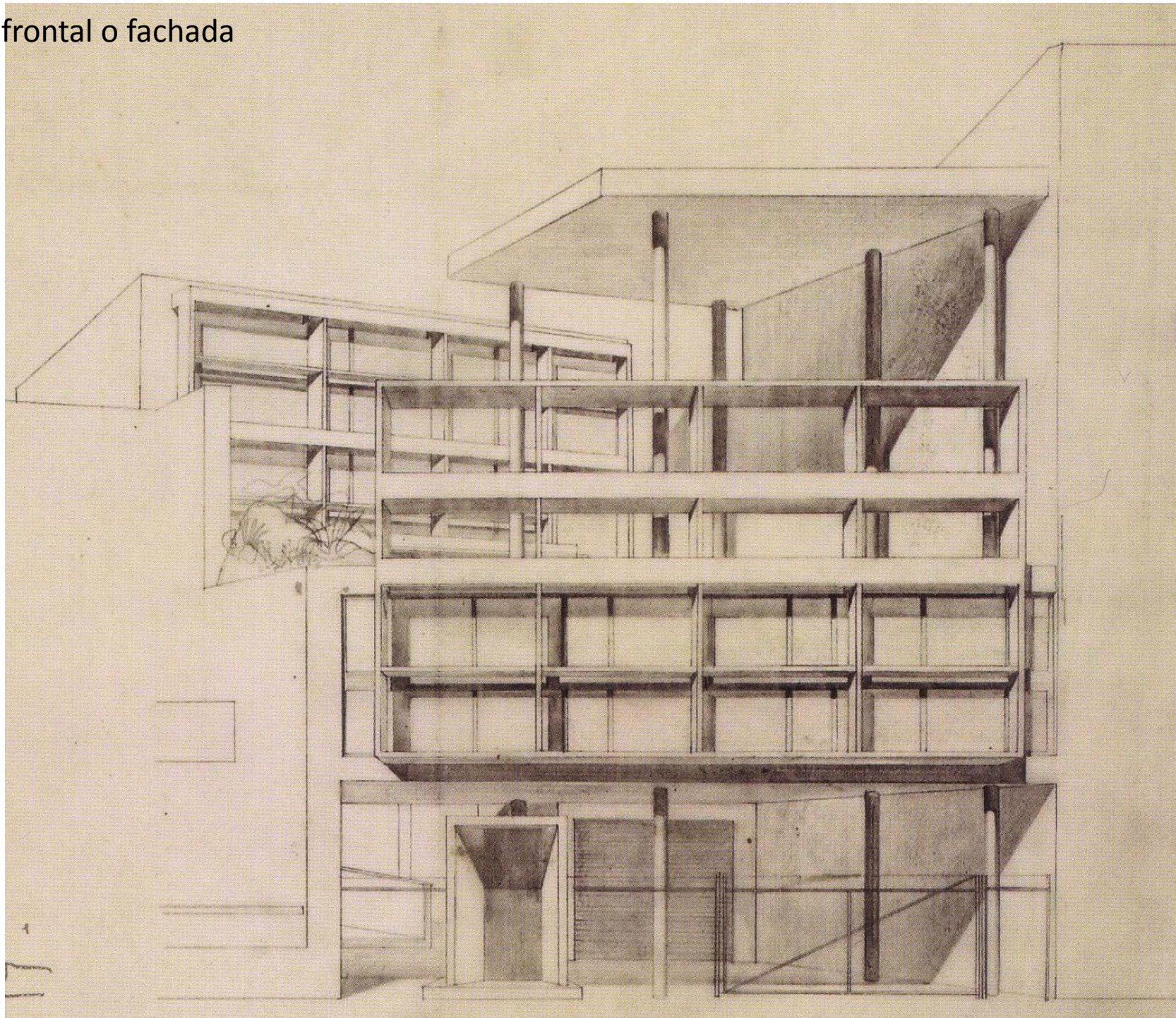
Vistas



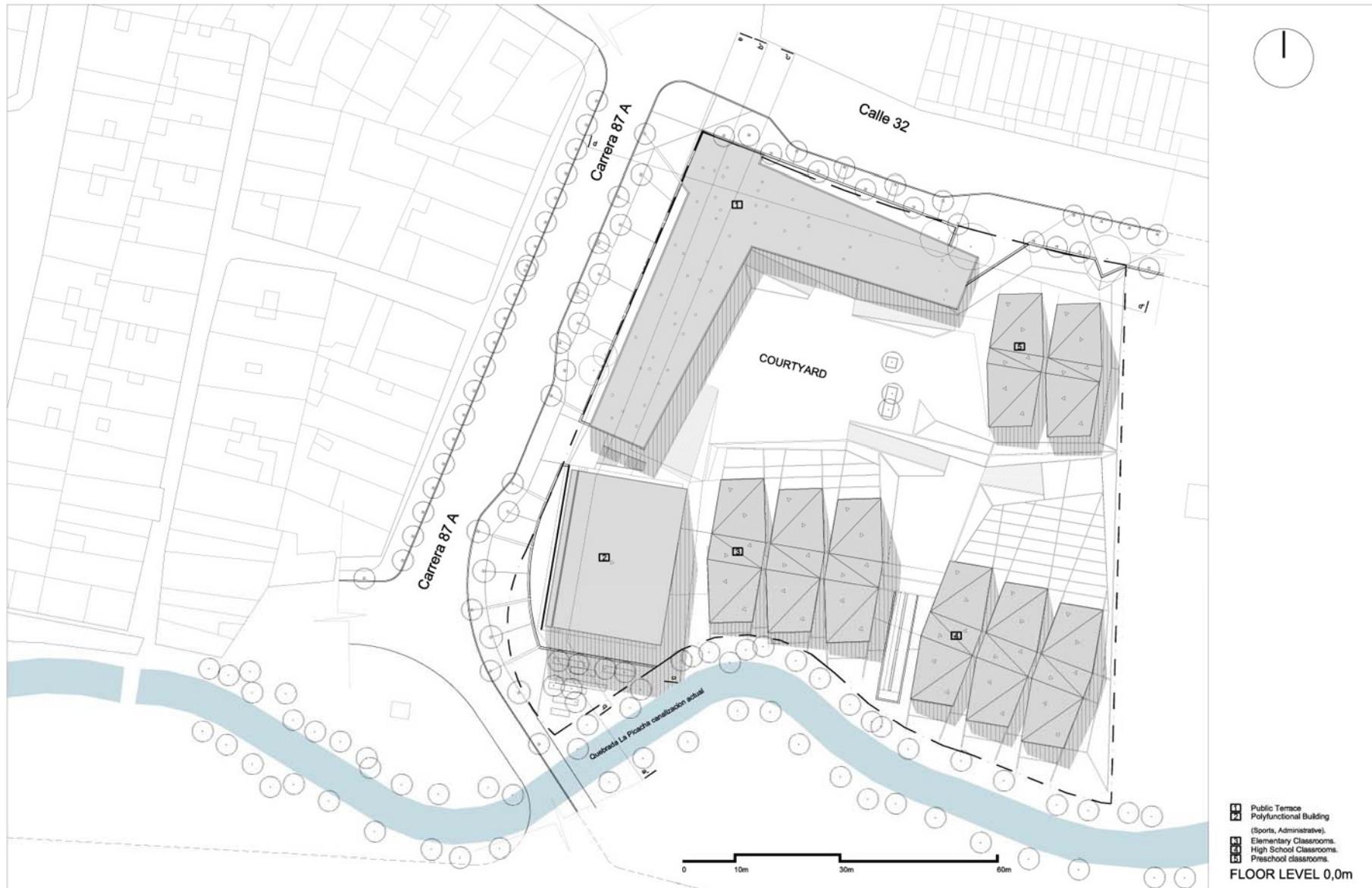
Vista frontal o fachada



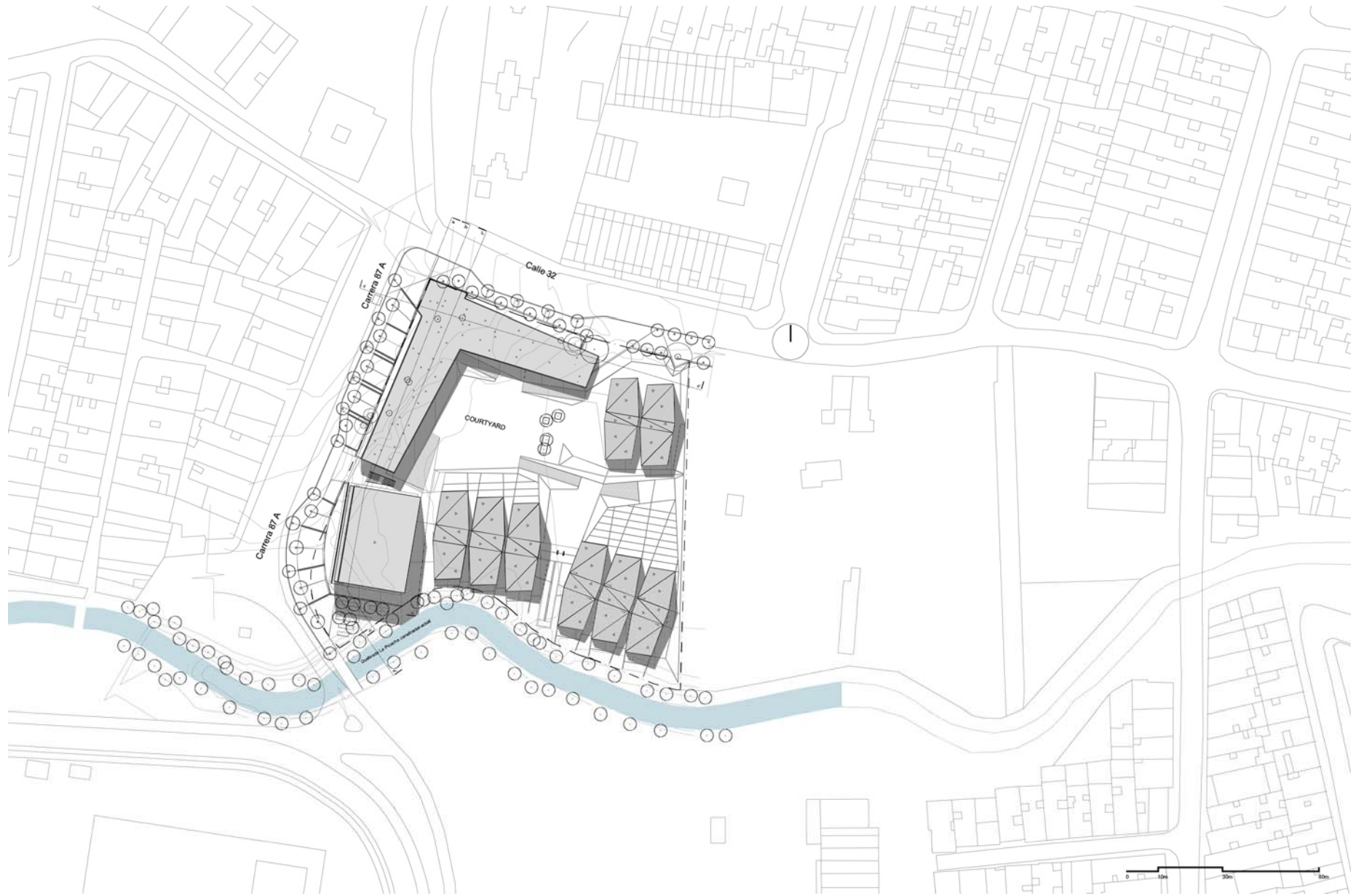
Vista frontal o fachada



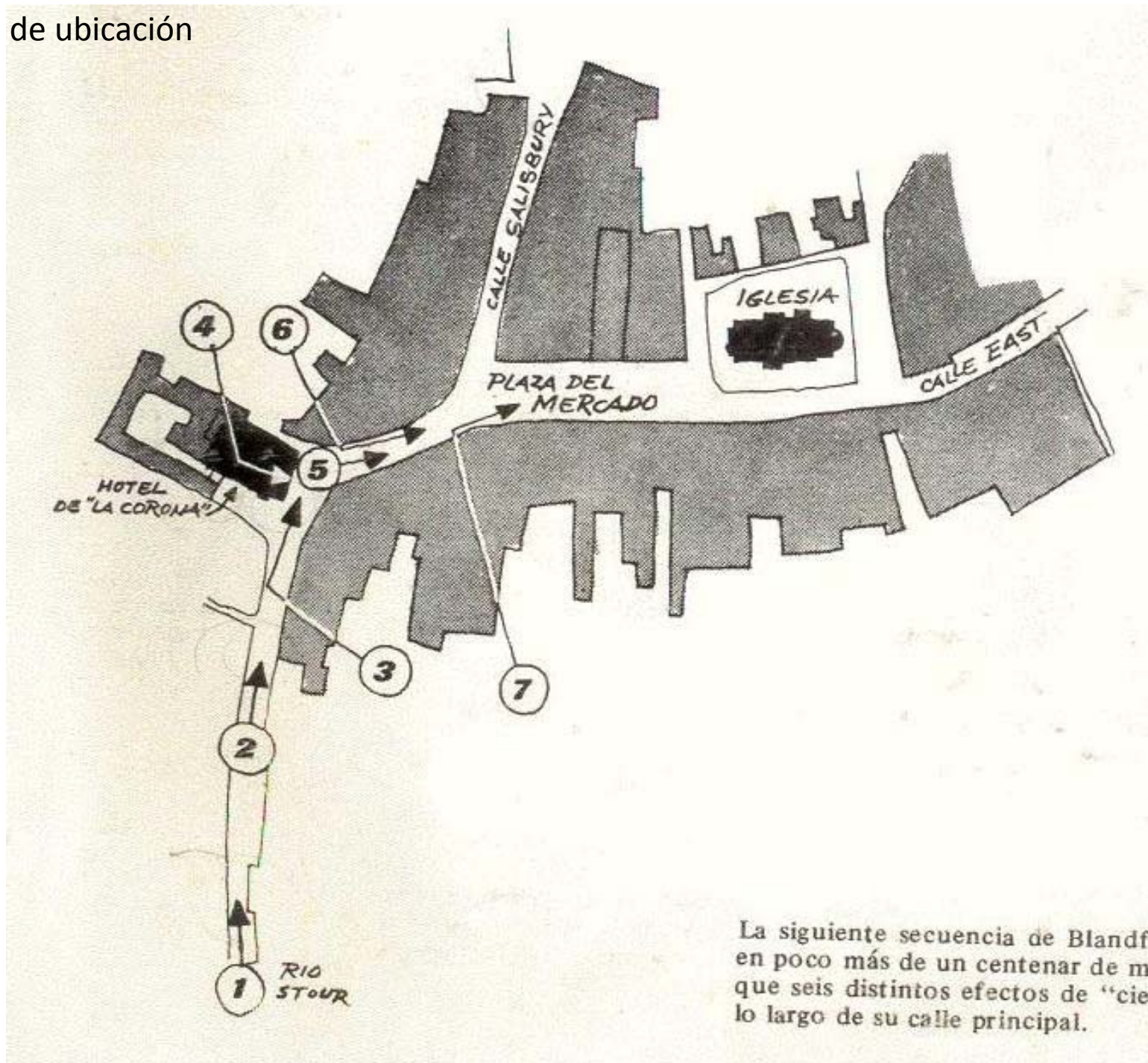
Planta de techo



Planta de ubicación

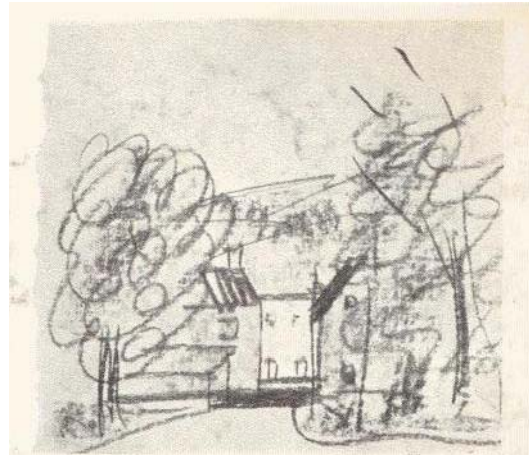


Esquema de ubicación

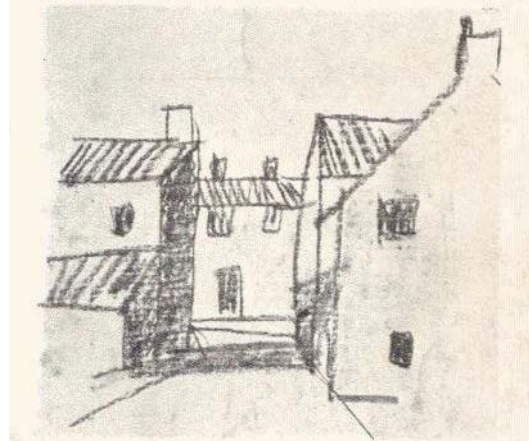


La siguiente secuencia de Blandford en poco más de un centenar de metros que seis distintos efectos de "cierro" lo largo de su calle principal.

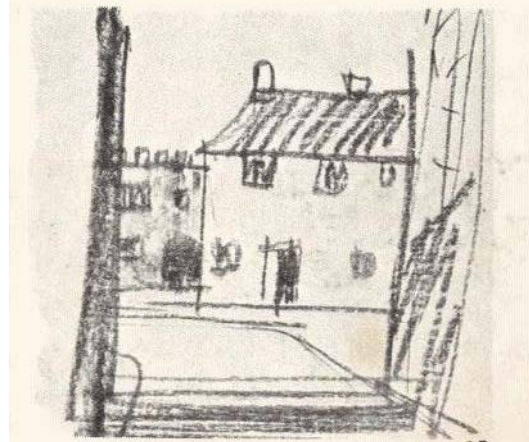
Croquis de recorrido



16



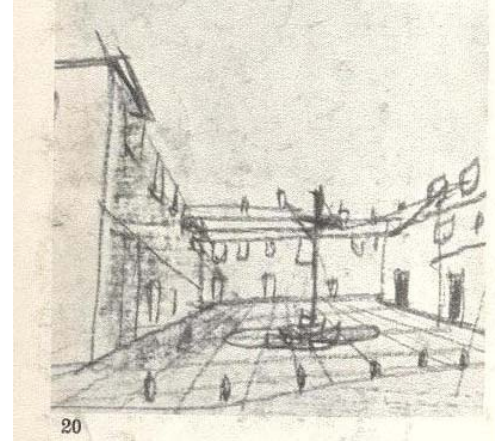
17



18



19

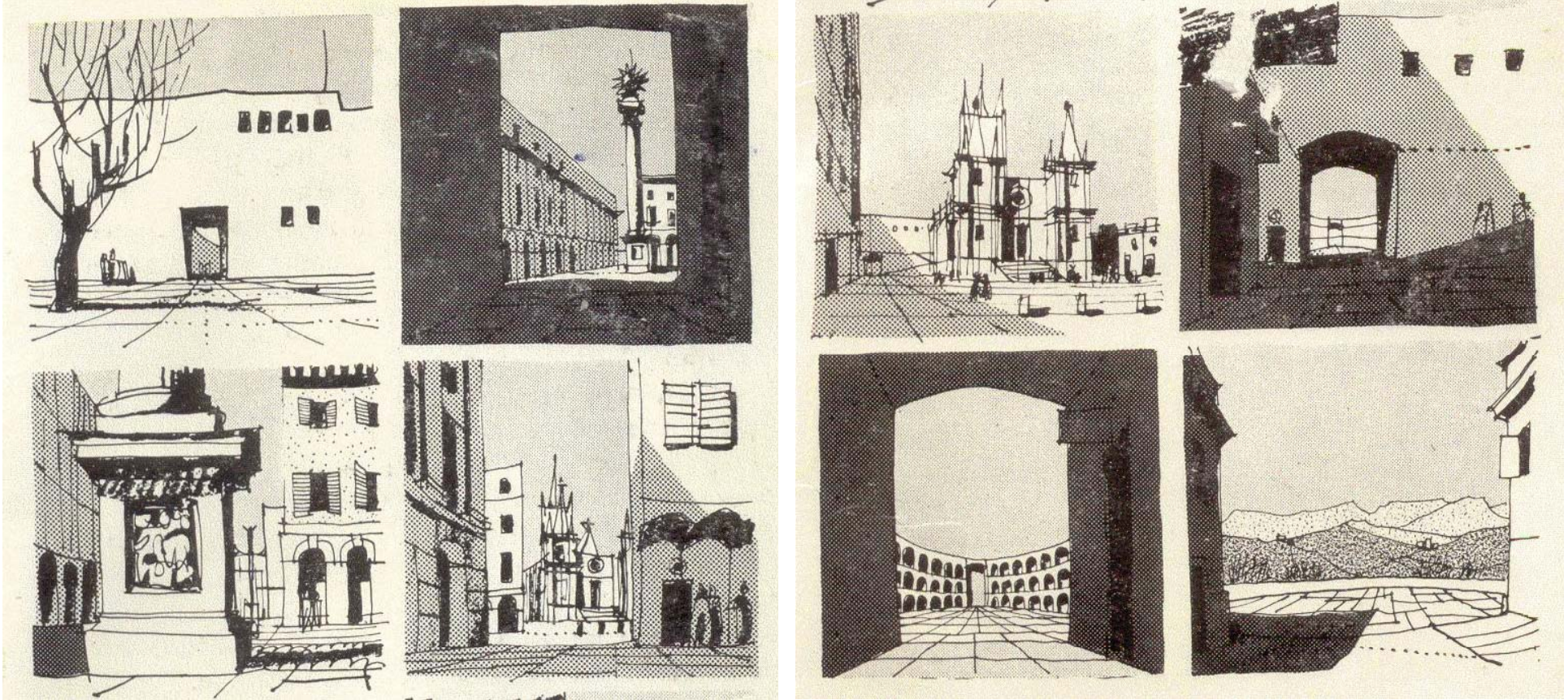


20



21

Croquis de recorrido



Secuencia fotográfica



23



22



21



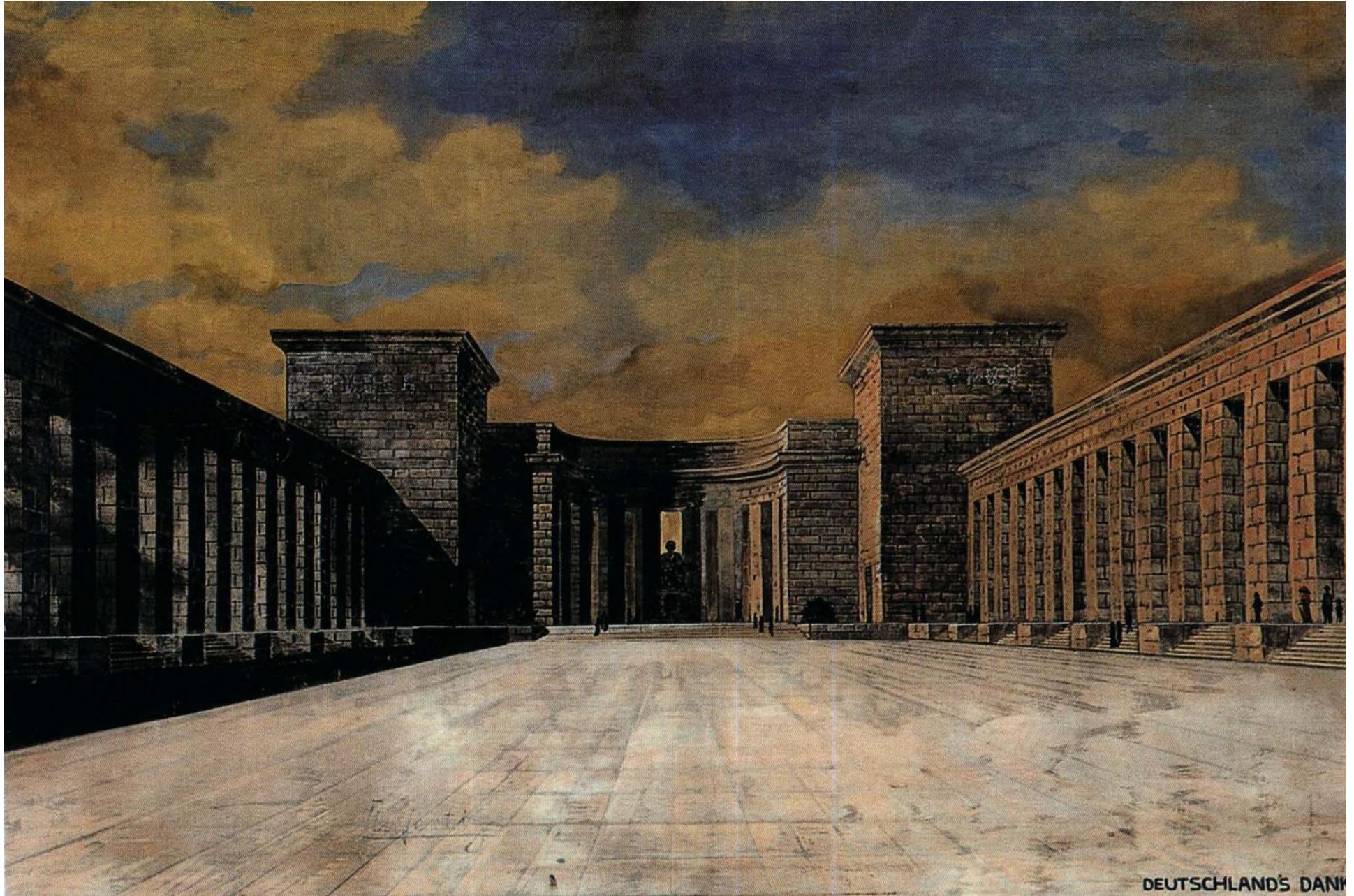
26



25



Perspectiva



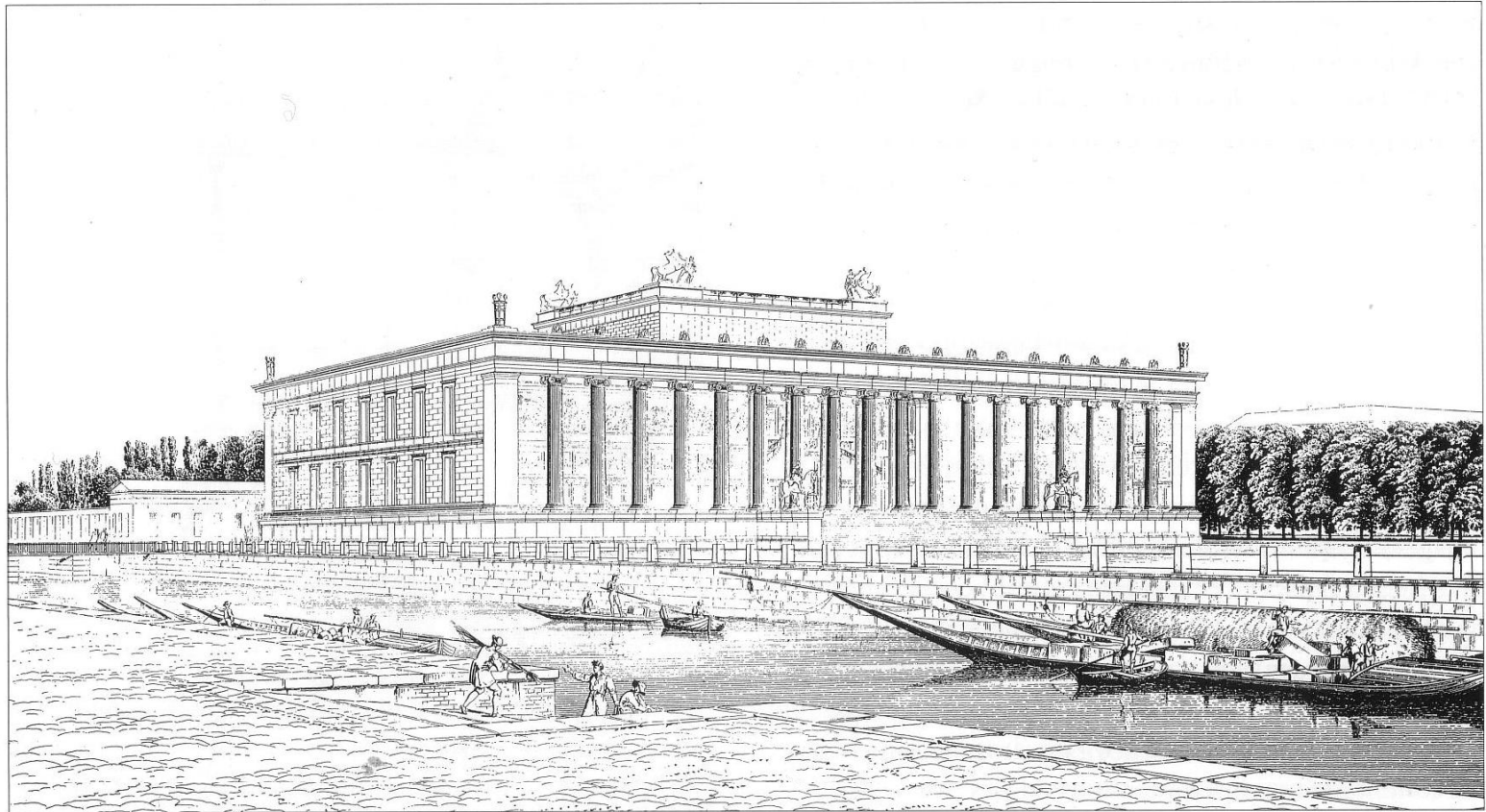
DEUTSCHLAND'S DANK

Perspectiva



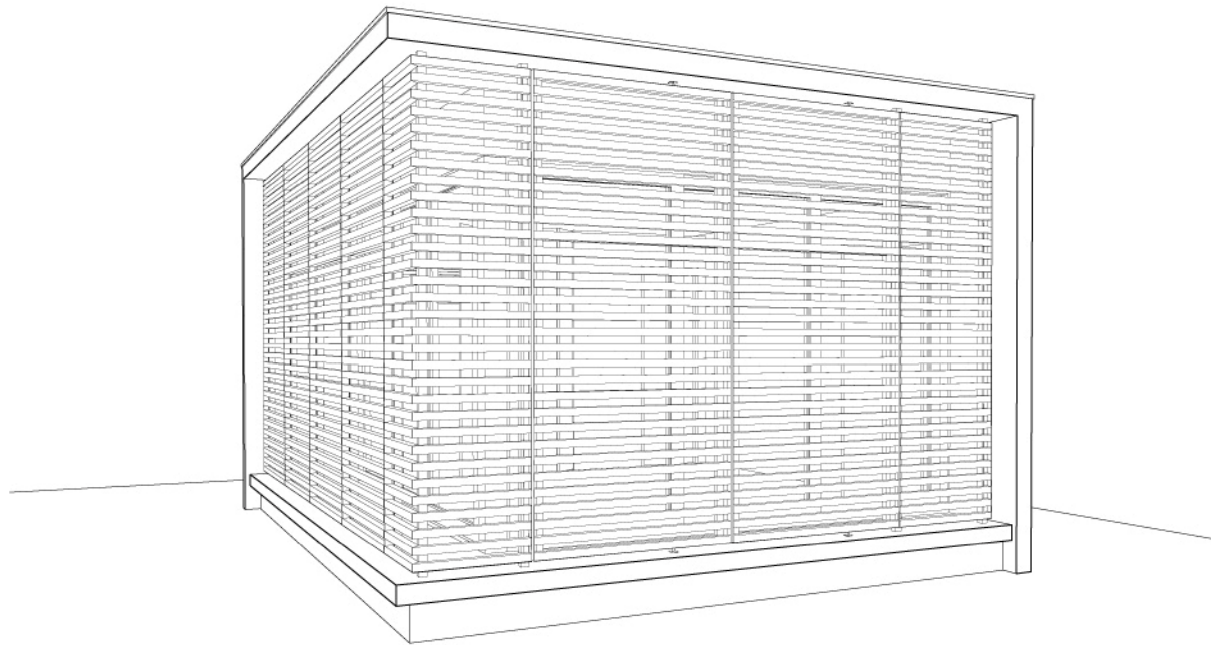
Perspectiva

3 Karl Friedrich Schinkel,
Altes Museum, Berlin,
1824-1828



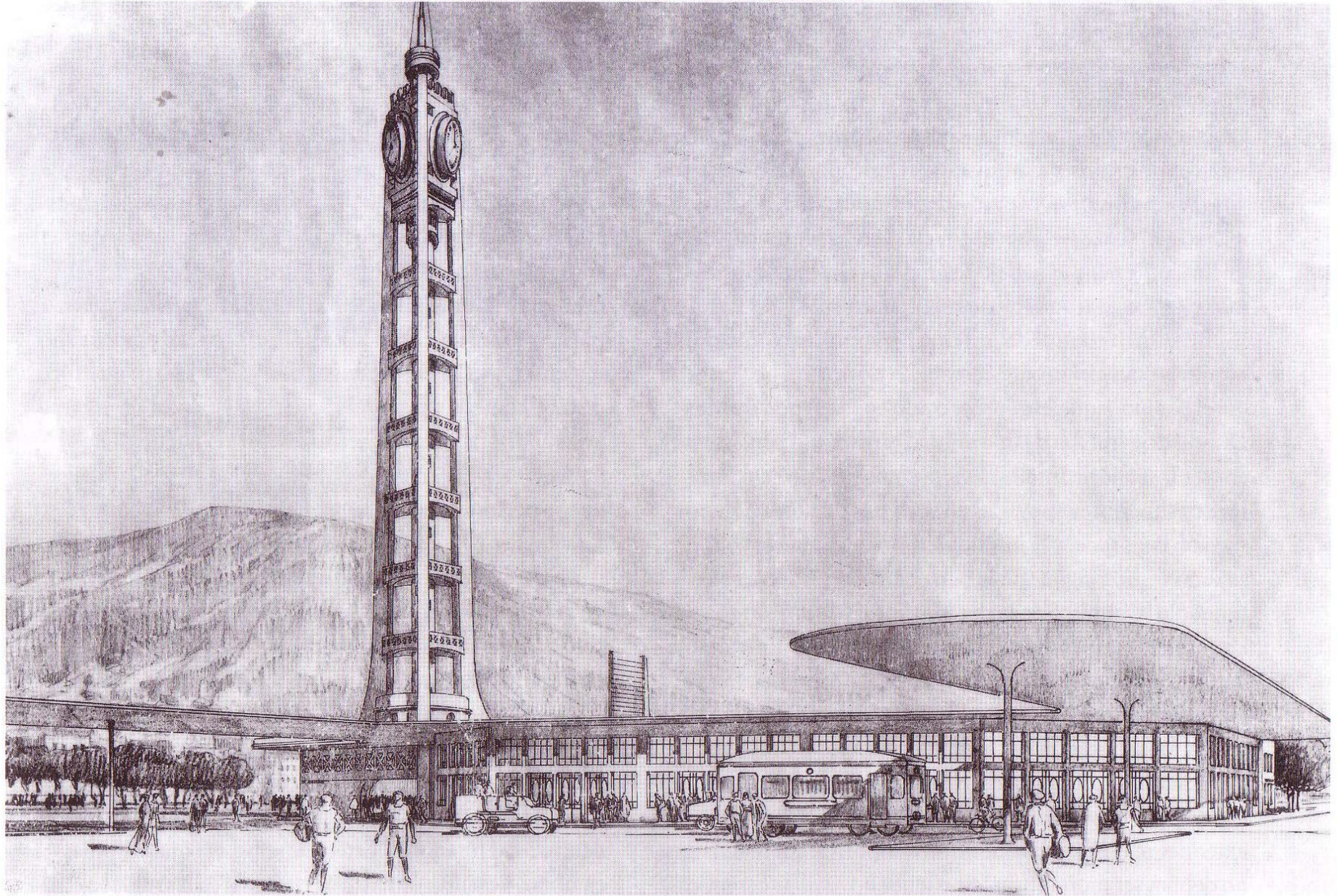
3

Perspectiva



LABARCA - LOPEZ ARQUITECTOS
Proyecto C2 - CONSULTA CUBO
Categoría: Arquitectura Institucional

Perspectiva

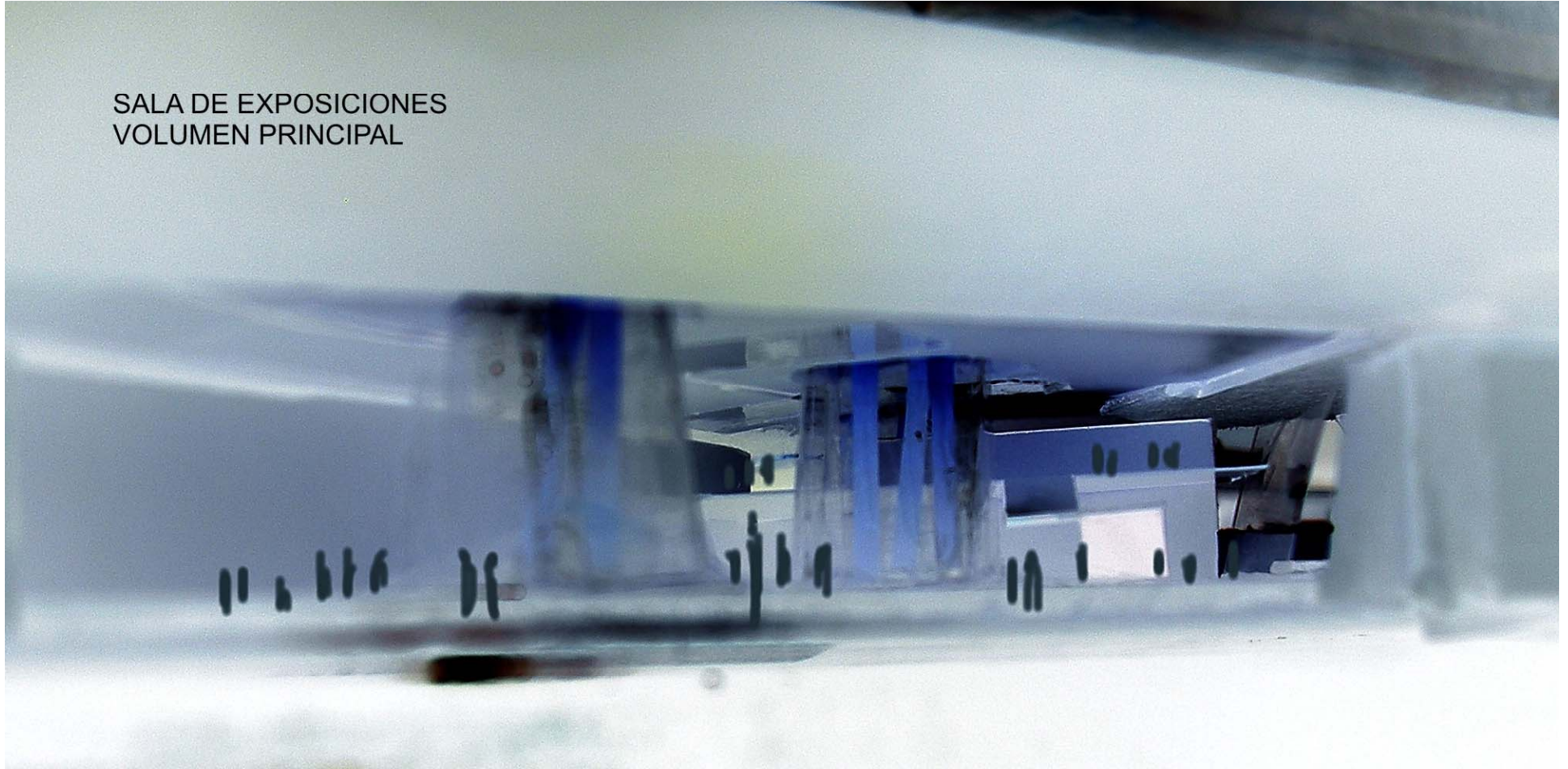


Perspectiva

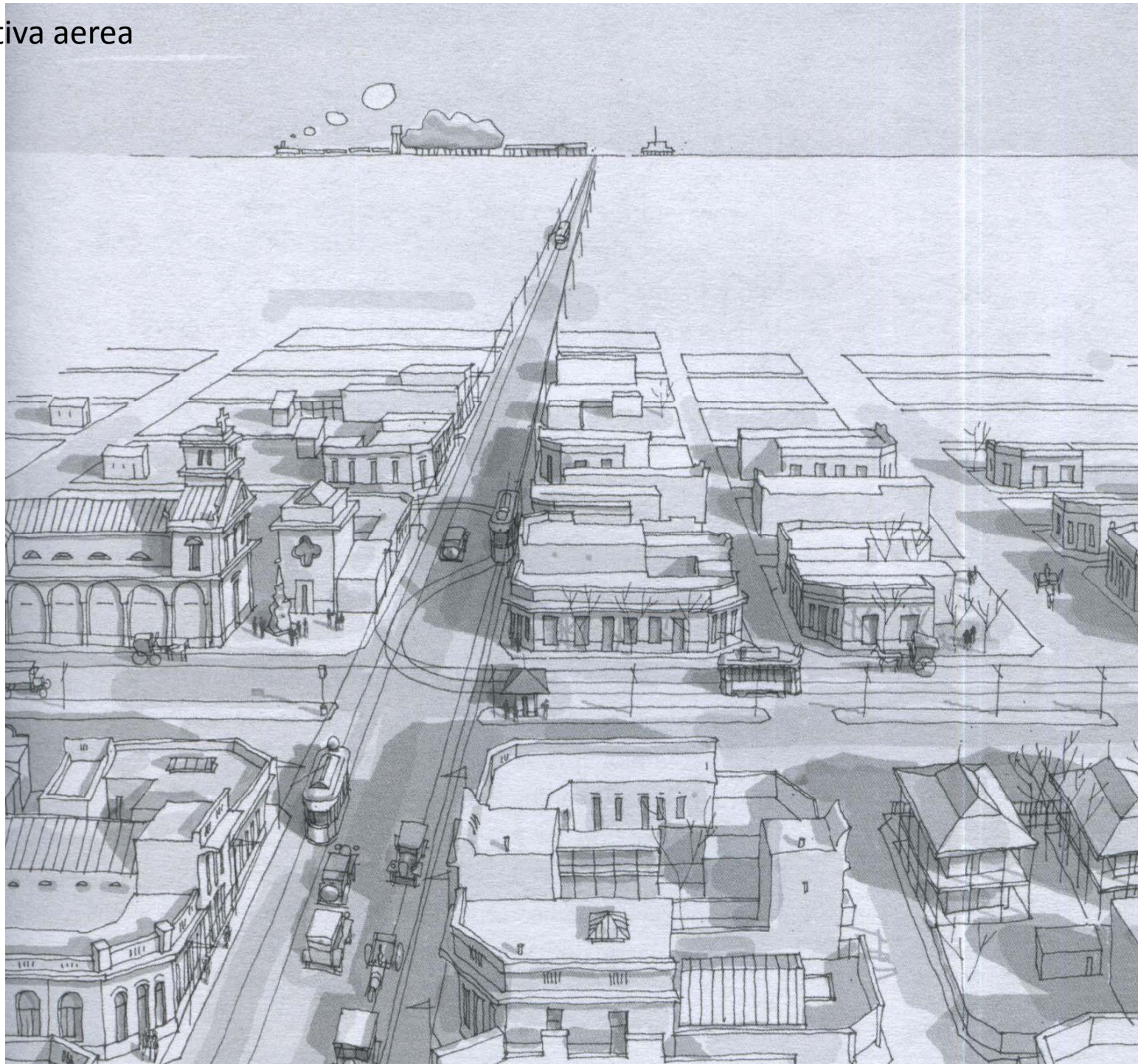


Perspectiva interior

SALA DE EXPOSICIONES
VOLUMEN PRINCIPAL

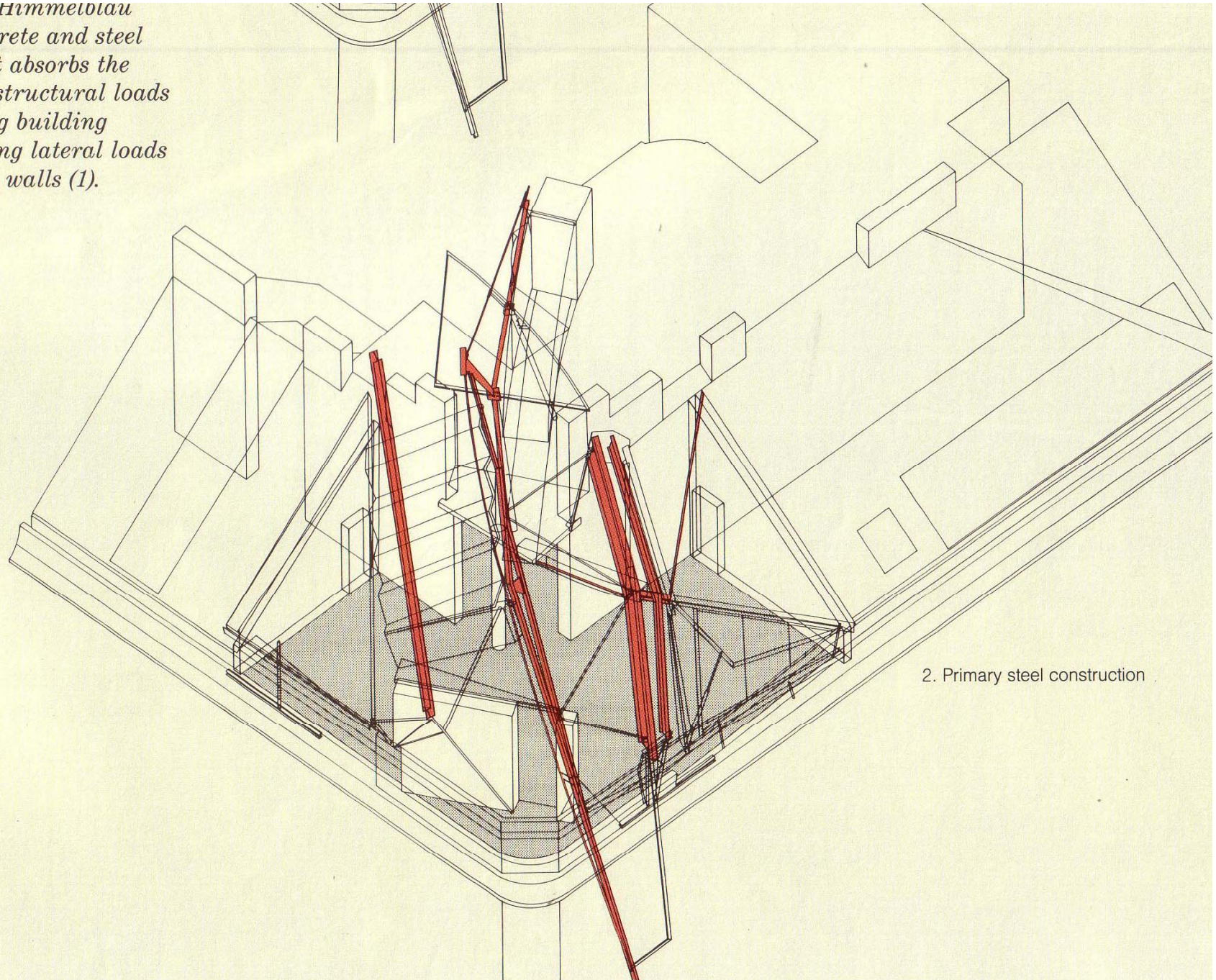


Perspectiva aerea



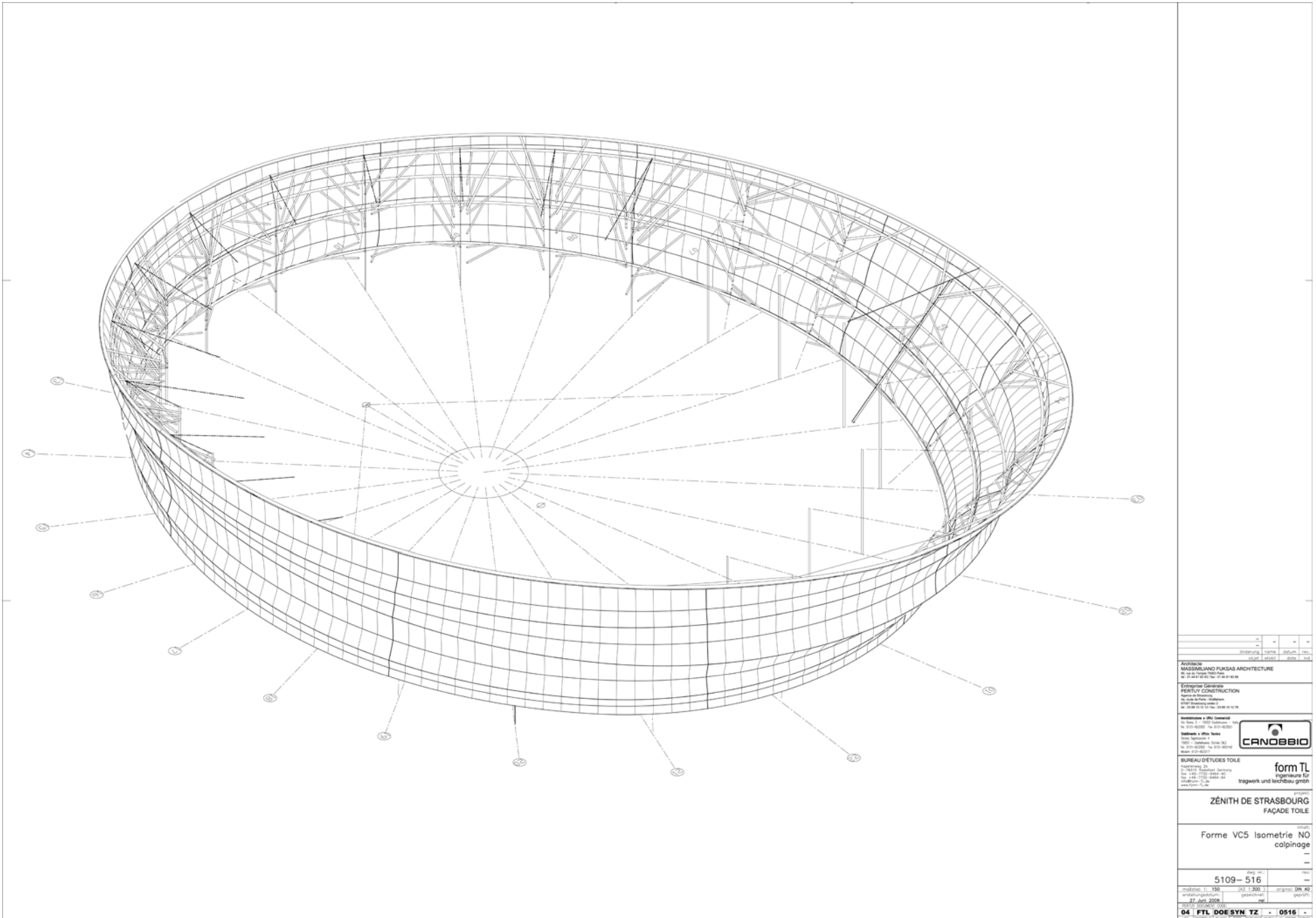
Axonometría

*addition, Coop Himmelblau
designed a concrete and steel
foundation that absorbs the
distribution of structural loads
onto the existing building
without deflecting lateral loads
to unreinforced walls (1).*



2. Primary steel construction

Axonometría



no.	—	—	—
indicación	forma	objetos	tipo
	objetos	objetos	objetos

Arquitecto
MADRIMILANO FUKAS ARCHITECTURE
 40, rue de la République, 67000 Strasbourg
 Tel: +33 (0)3 88 11 11 11 Fax: +33 (0)3 88 11 11 12

Entrepreneur Général
FERRUY CONSTRUCTION
 10, rue de la République, 67000 Strasbourg
 Tel: +33 (0)3 88 11 11 11 Fax: +33 (0)3 88 11 11 12

Coordination & JEK Concept
 10, rue de la République, 67000 Strasbourg
 Tel: +33 (0)3 88 11 11 11 Fax: +33 (0)3 88 11 11 12

Industria y obra:
 10, rue de la République, 67000 Strasbourg
 Tel: +33 (0)3 88 11 11 11 Fax: +33 (0)3 88 11 11 12

BUREAU D'ÉTUDES TOILE
 10, rue de la République, 67000 Strasbourg
 Tel: +33 (0)3 88 11 11 11 Fax: +33 (0)3 88 11 11 12



fom TL
 ingeniería für
 tragwerk und schichtbau gmbh

ZÉNITH DE STRASBOURG
 FAÇADE TOILE

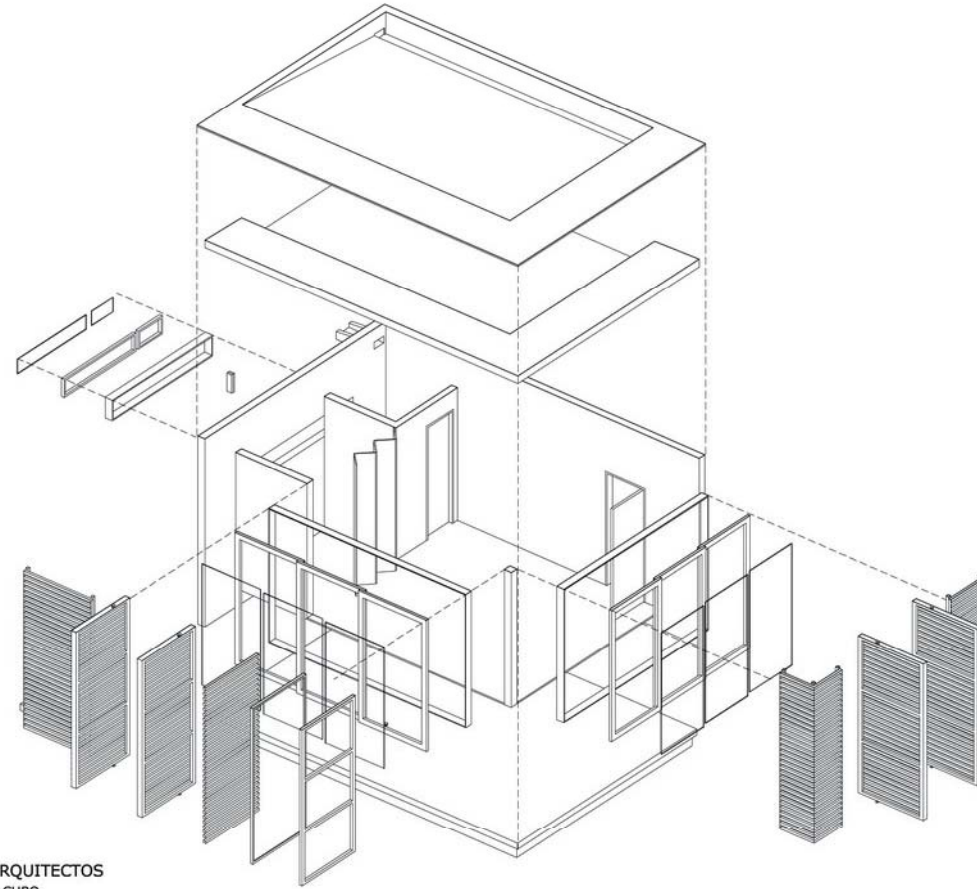
Forme VC5 Isometrie NO
 calpinage

5109-516

échelle: 1:150 (A3: 1:300) | projeté: DR AD
 date: 27 Juin 2006 | dessiné par: pep/ft

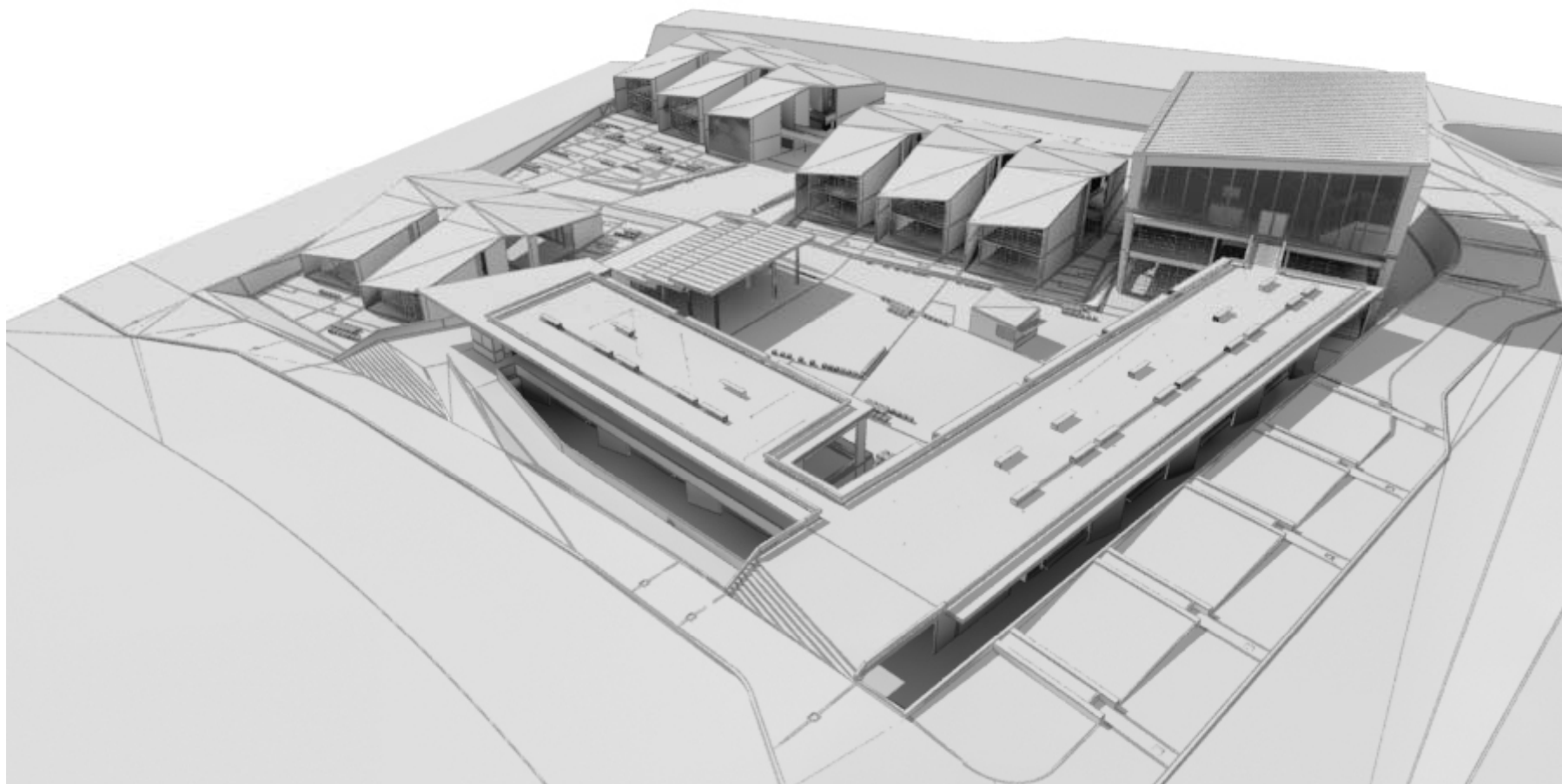
04 FTL DOESYN TZ - 0516 -
 107 - ÉTUDES DE PROJET - TRAVAIL COLLABORATIF - V. GÉRARD - INDO

Axonometría



LABARCA - LOPEZ ARQUITECTOS
Proyecto C2 - CONSULTA CUBO
Categoría: Arquitectura Institucional

Modelos a escala



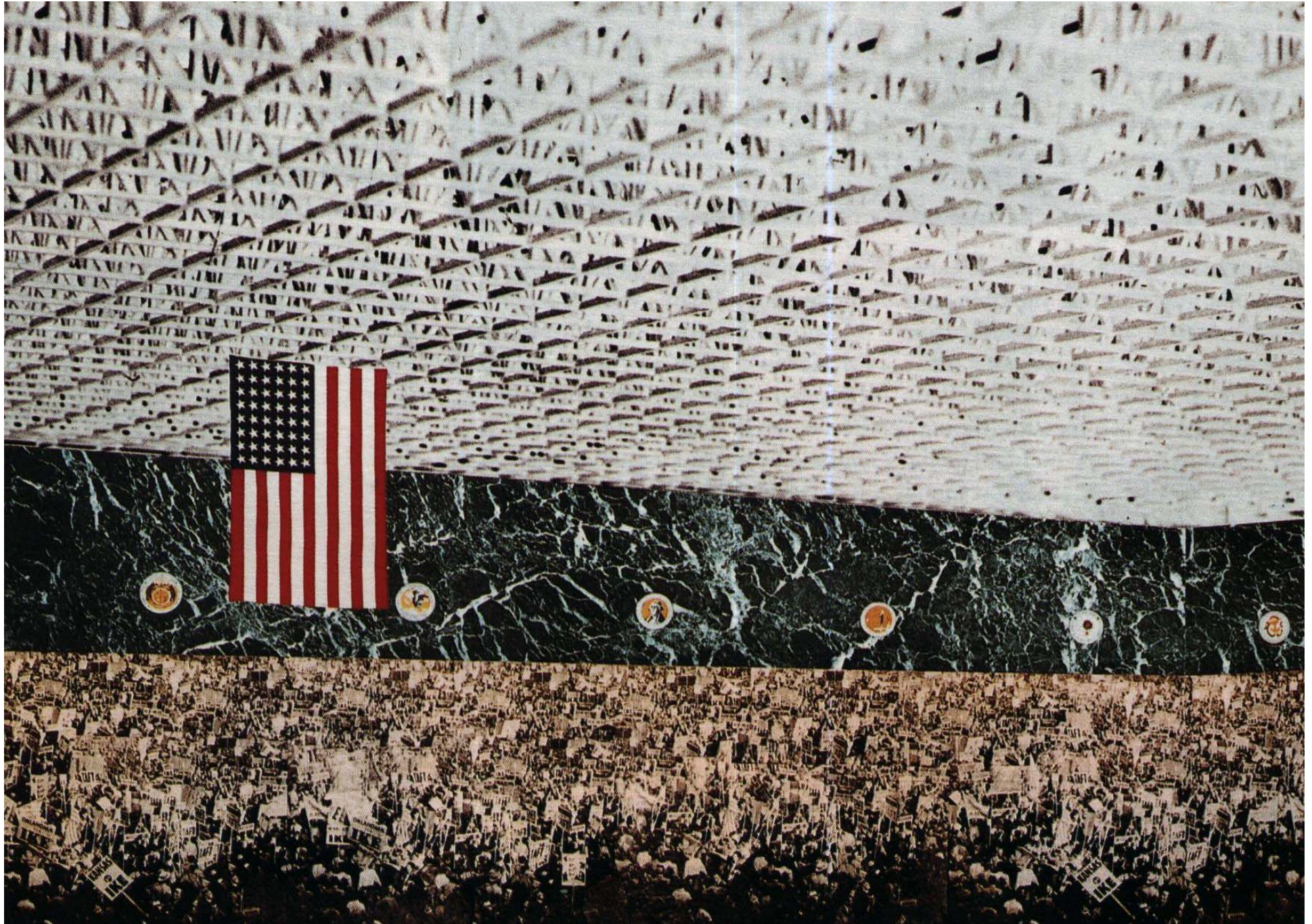
Modelos a escala



Modelos a escala
Fotografía



Colagge



Colagge



Color

